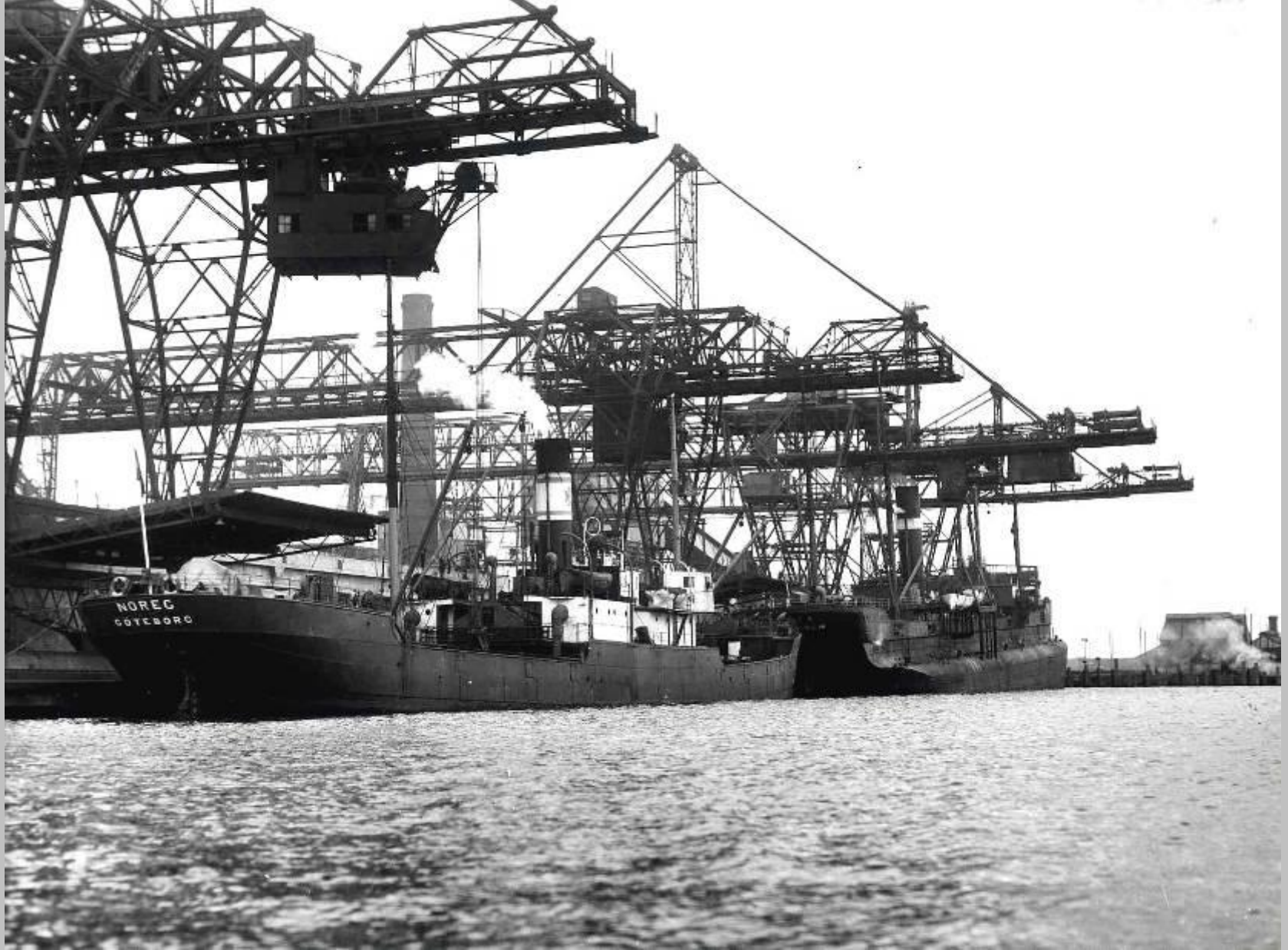
An aerial, black and white photograph of a large industrial port. The scene is dominated by a wide waterway filled with numerous ships, including large ore carriers and smaller vessels. On the left, a long pier or wharf extends into the water, with several large ships docked. The background shows a densely populated urban area with many buildings and a hillside. The overall atmosphere is one of a busy, industrial maritime hub.

***Photos of the Ore  
Carriers  
on  
Margam Wharf,  
Port Talbot  
Dock***



Swedish 'Noreg' reg'd Goteborg, with a 'turret ship' ahead of her 1951



Swedish 'Kajtum' reg'd Stockholm, beneath old short boom unloader

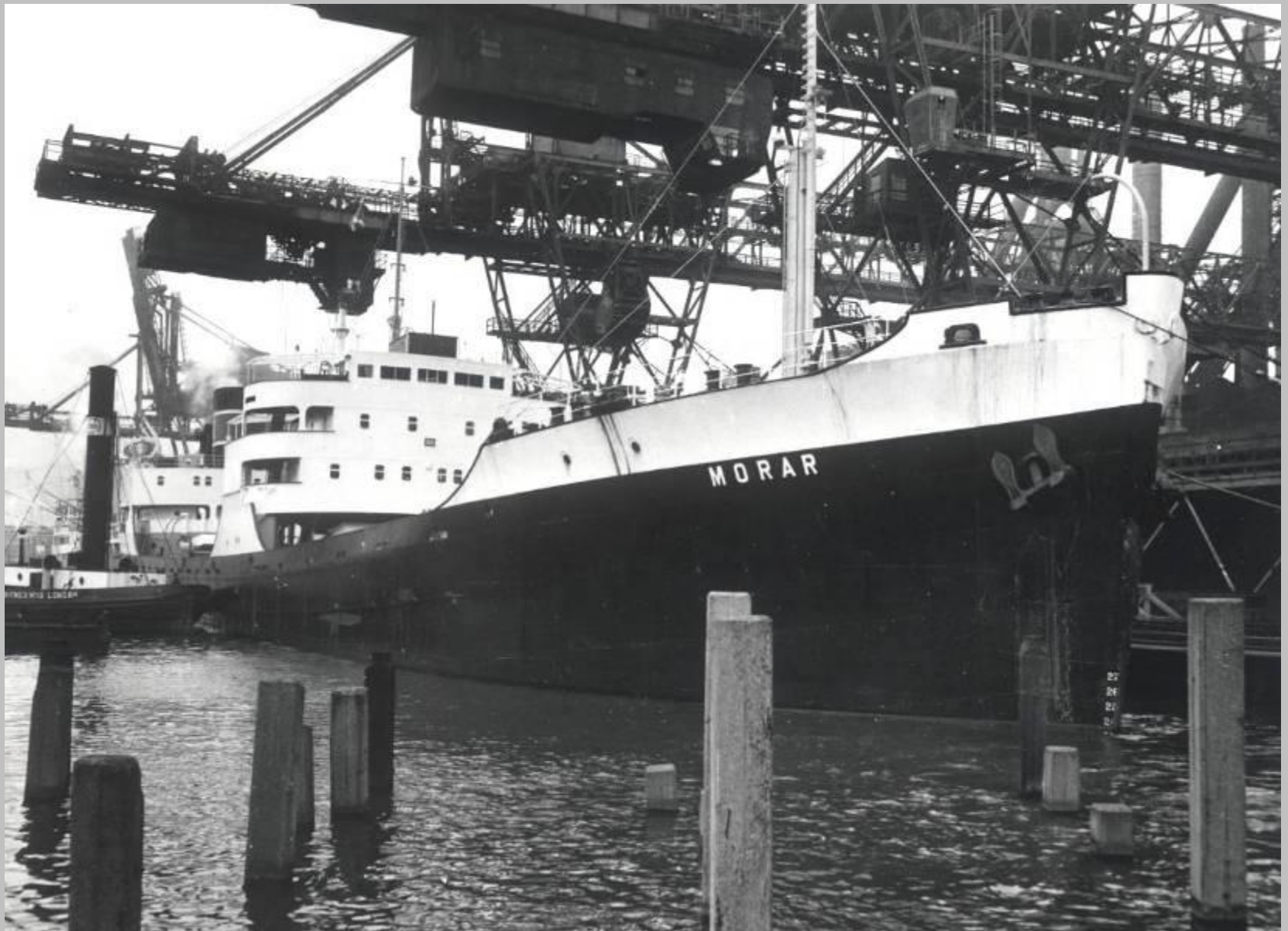


Swedish 'Kajtum' with older unloader working aft holds

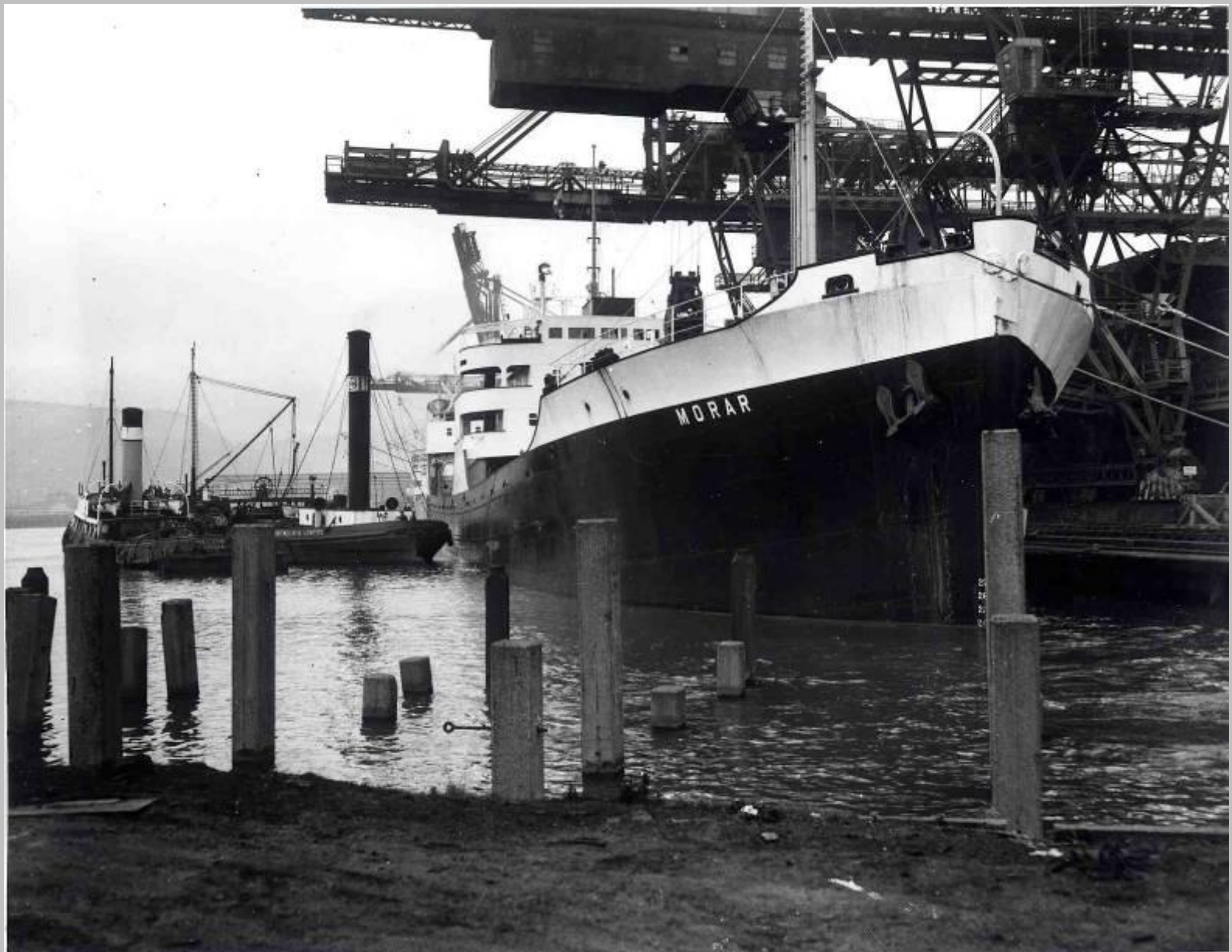


'Morar' Margam Wharf 1956 Powered by experimental free piston

Gas Generators. Later sold to a German Company & Re-Engined with diesel power  
and renamed mv 'Arnis' She was scrapped in Taiwan in 1980



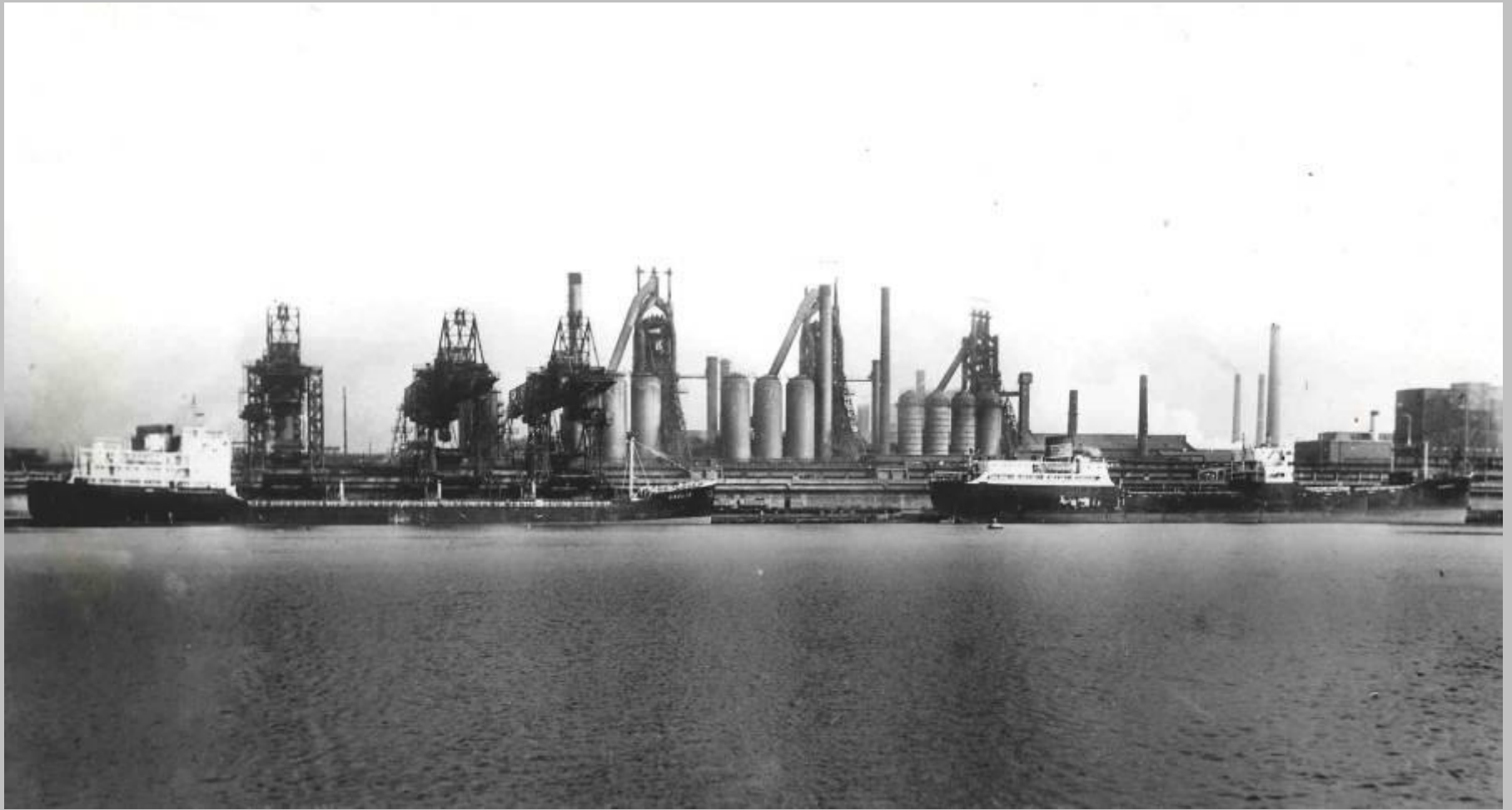
Gas Turbine Powered 'Morar' Margam Wharf 1956



G.T. powered 'Morar' with Esso bunkering barge ass'd by an Alexandra tug



G.T. powered 'Morar' unloading at Margam Wharf 1956



Iron Ore Carrier mv 'Orelia' & ss 'Gleddoch' on Margam Wharf 1956



Mv 'Orelia' discharging iron ore with the ss 'Gleddoch' waiting to sail in 1956



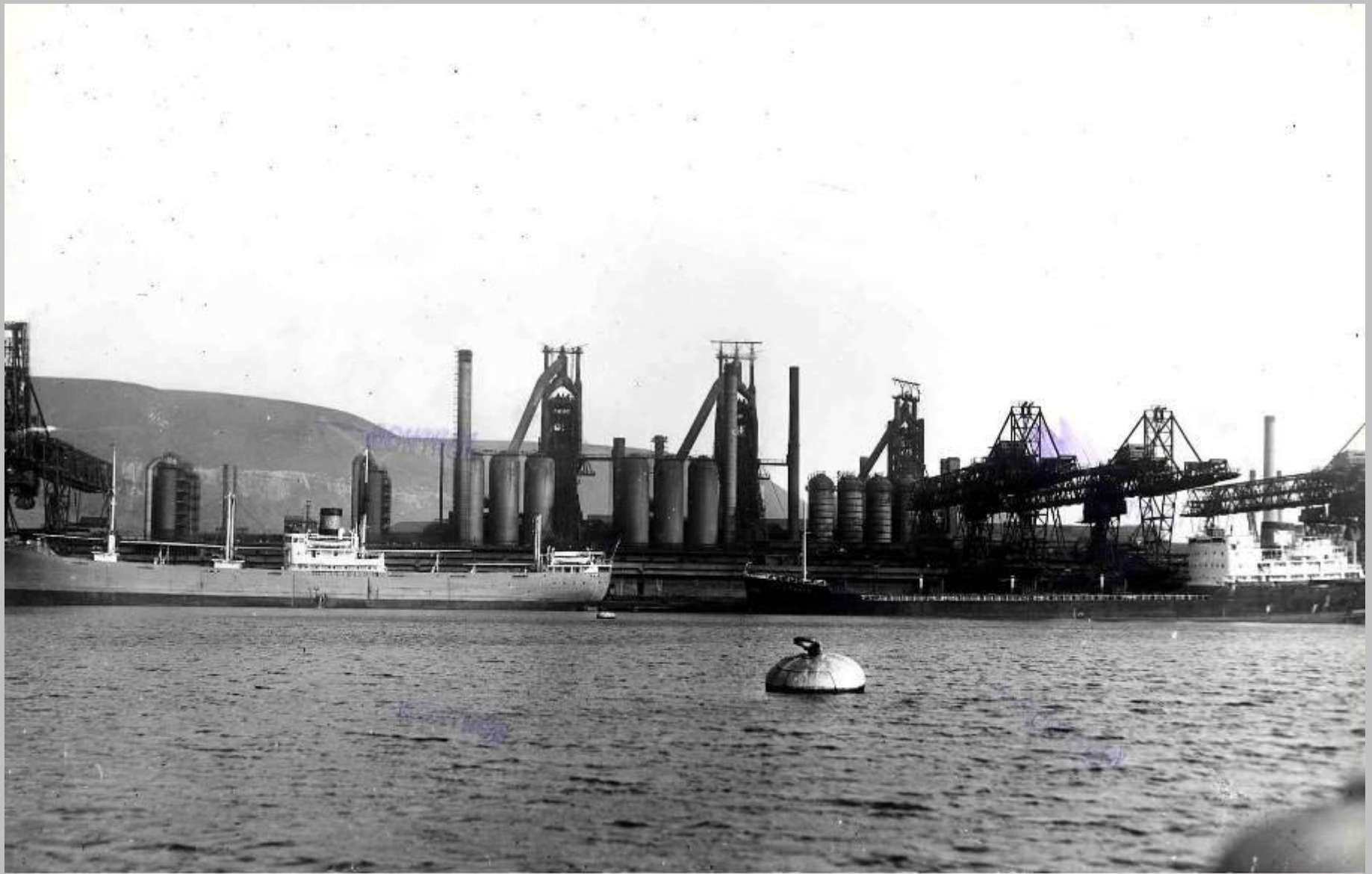
mv 'Orelia' discharging iron ore with the ss 'Gleddoch' waiting in to sail in 1956



Mv 'Oregis' unloading iron ore down by bow, early morning, Margam Wharf



Mv 'Oregis unloading, with the Swedish 'K' boat ahead and waiting to sail



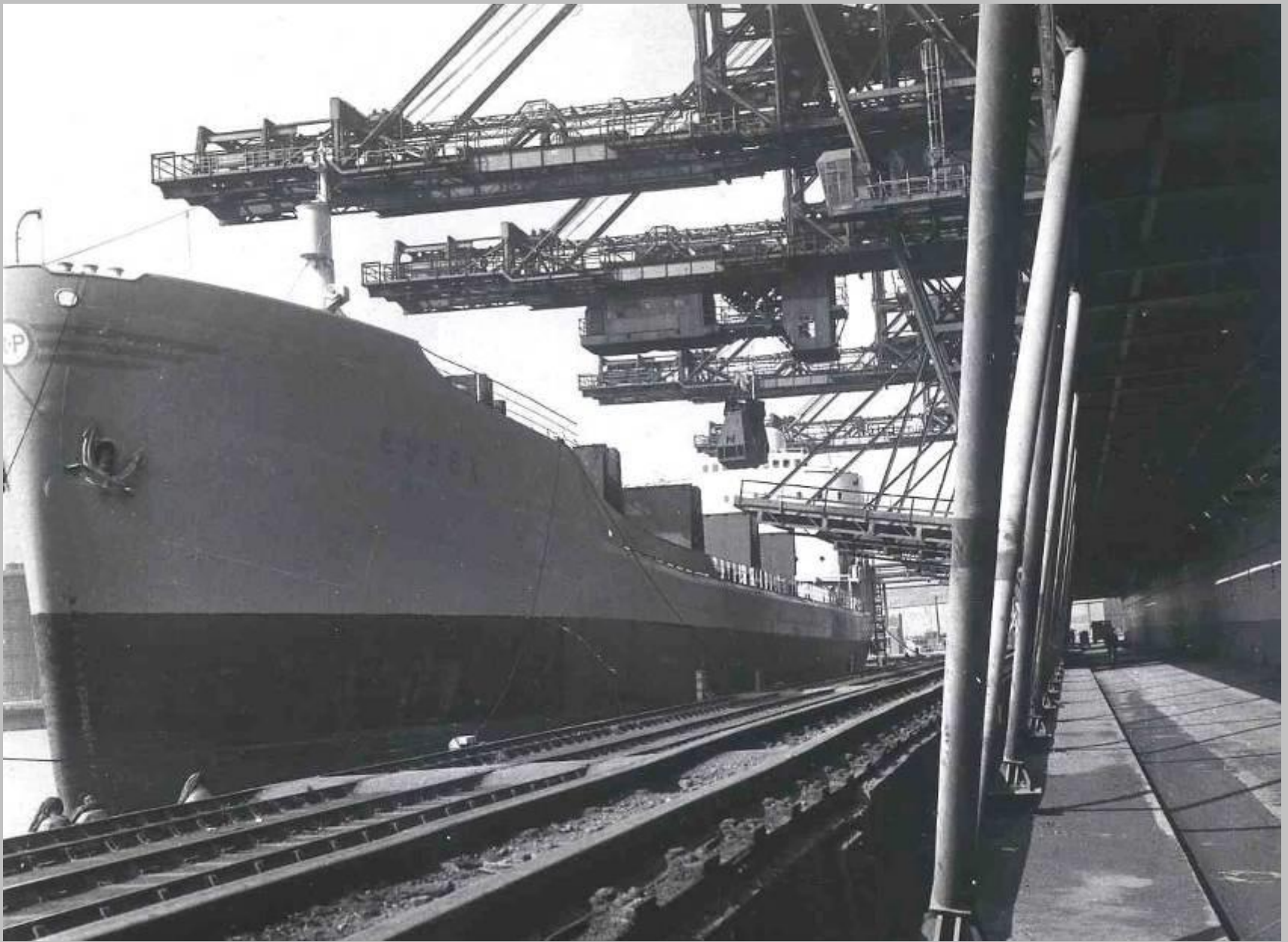
Swedish 'K' boat ready to sail with the mv 'Oregis' unloading. Apr. Mid day



Mv 'Oregis' later in the day, nearly unloaded, now on even keel



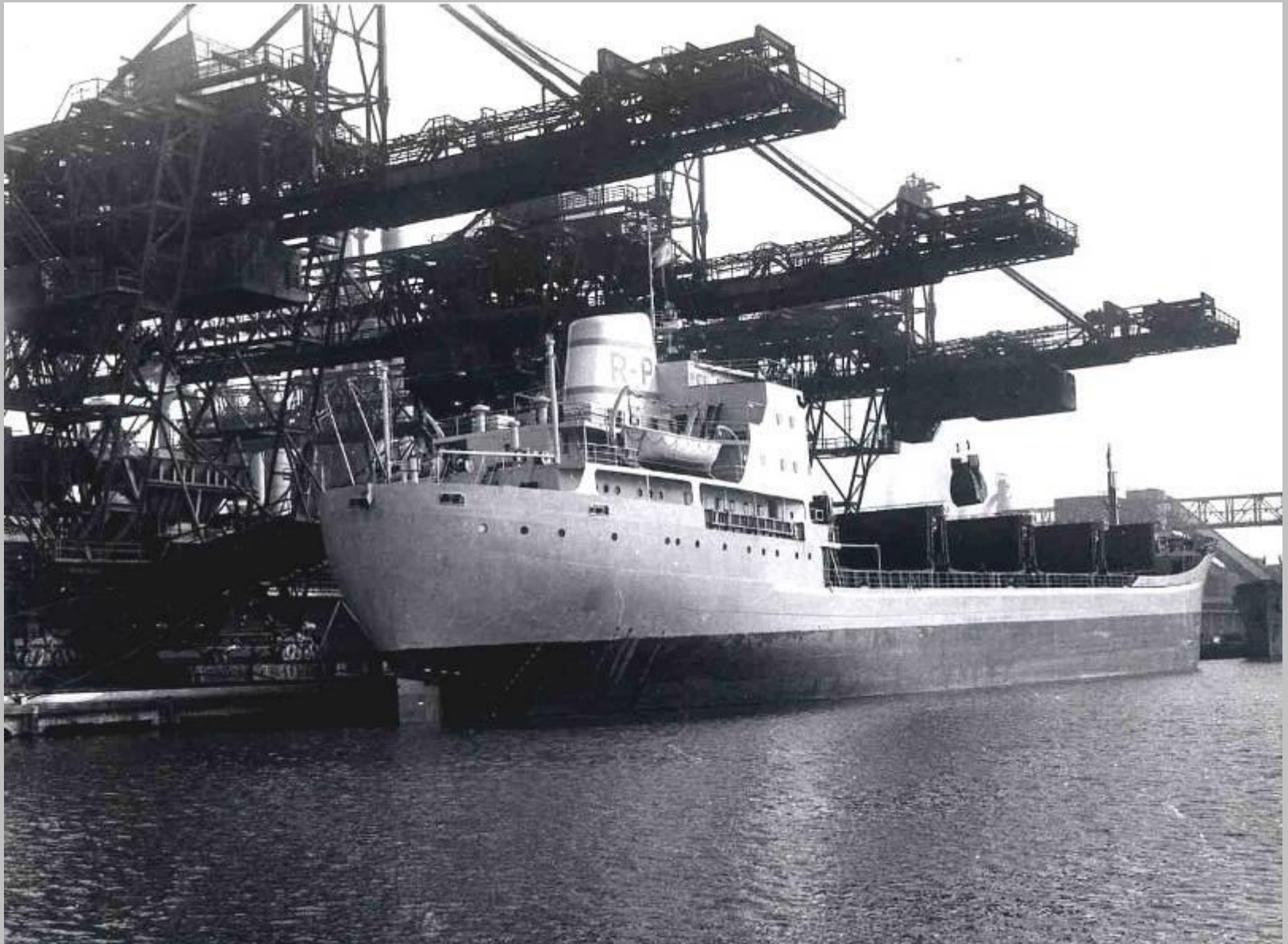
Mv 'Oregis' later in the day, nearly unloaded, now on even keel, with the 'K' boat ahead.



Norwegian mv 'Essex' unloading at Margam Wharf 1959



Norwegian mv 'Essex unloading at Margam Wharf 1959



Norwegian mv 'Essex unloading at Margam Wharf 1959

An aerial, black and white photograph of a vast industrial port or shipyard. The scene is dominated by a large body of water filled with numerous ships, including sailing vessels and larger industrial vessels. The shoreline is lined with extensive industrial infrastructure, including long piers, cranes, and various buildings. In the background, a city is visible, nestled at the base of a range of mountains. The overall atmosphere is one of a busy, large-scale industrial operation.

# *The End*

*21 To return to Menu use the left  
arrow on the explorer bar*