

Port Talbot

Dock

Misc

Photos



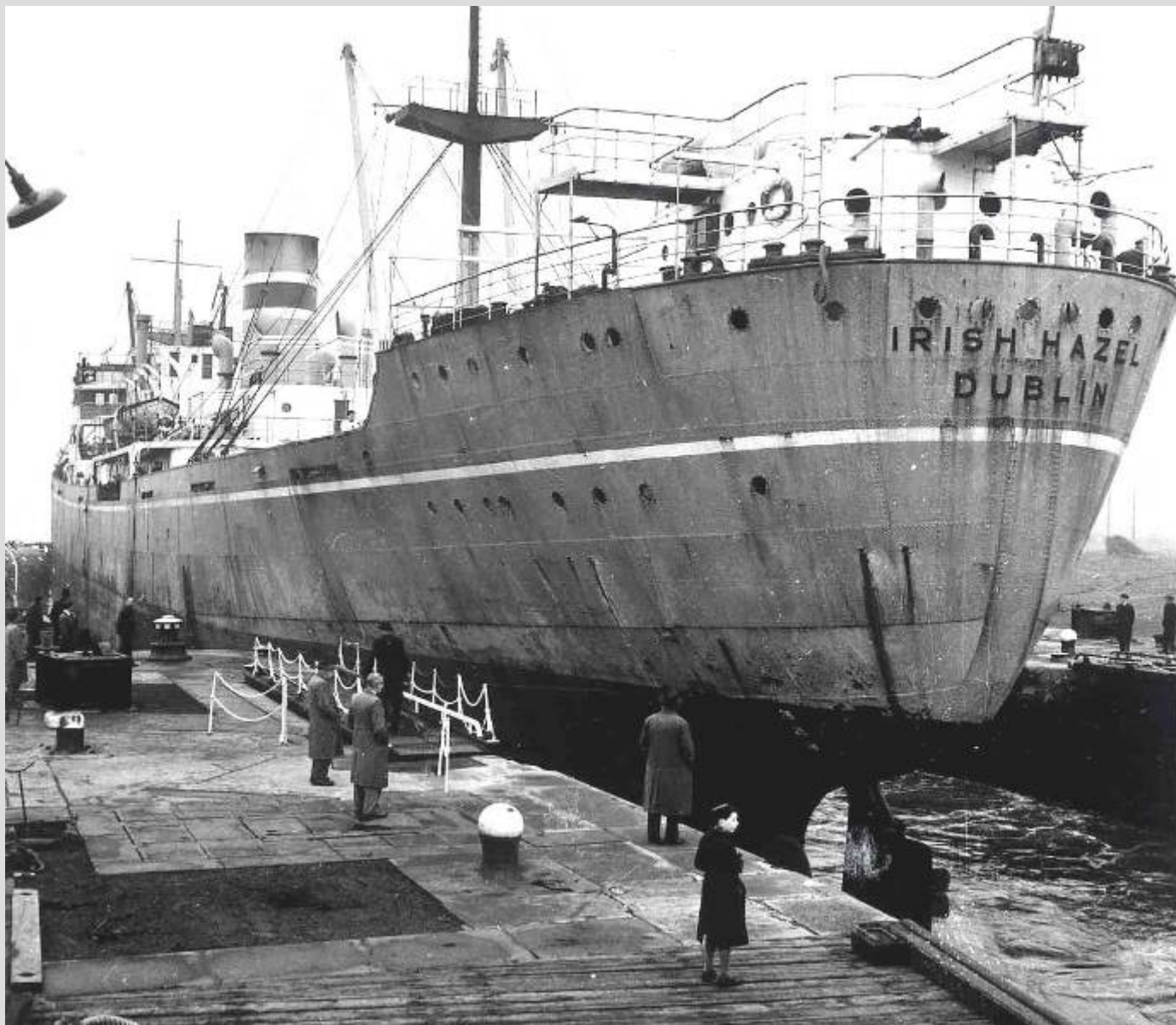
Mv "Morar", Greenock



ss Irish Hazel entering Port Talbot Docks



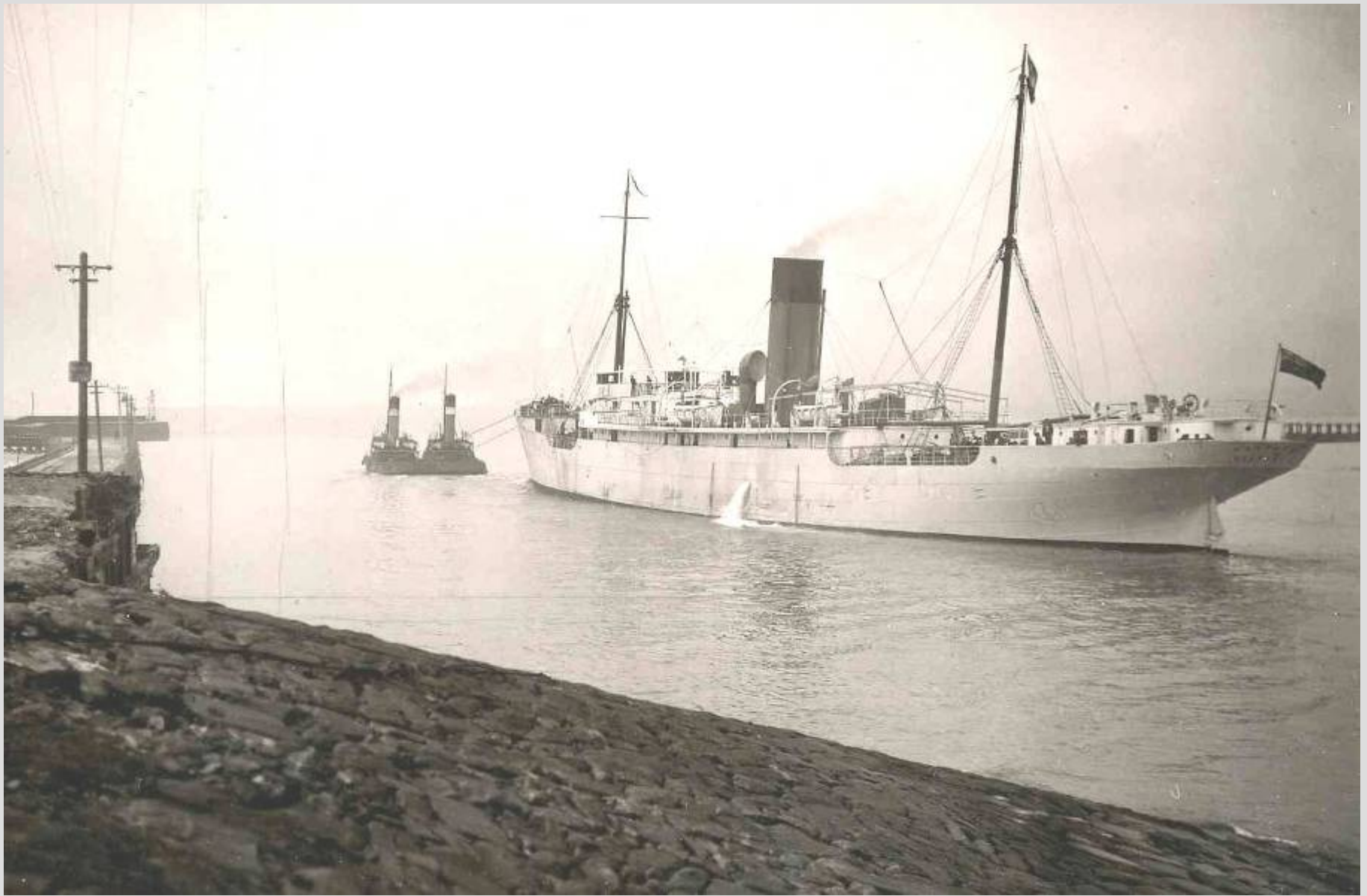
Ss "Irish Hazel" entering Port Talbot Docks



ss "Irish Hazel" entering Port Talbot Dock Locks



ss "Pacuare" leaving Port Talbot Docks



ss "Pacuaré" leaving Port Talbot Docks



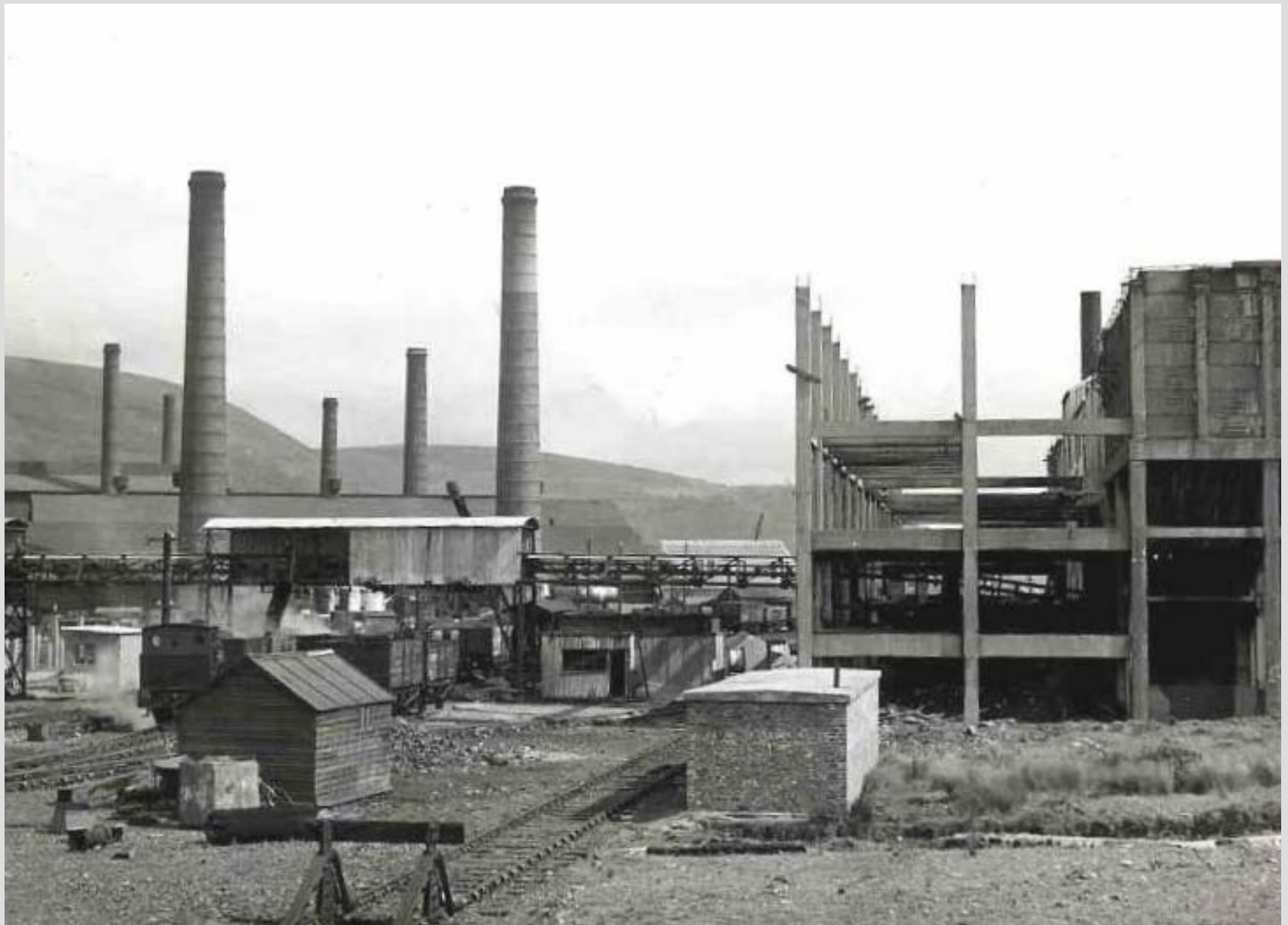
Sailing barque 'Passat' at Port Talbot Dock Sailing barque 'Passat' in Port Talbot Dry Dock



Phoenix fuel works under construction



Phoenix fuel works under construction



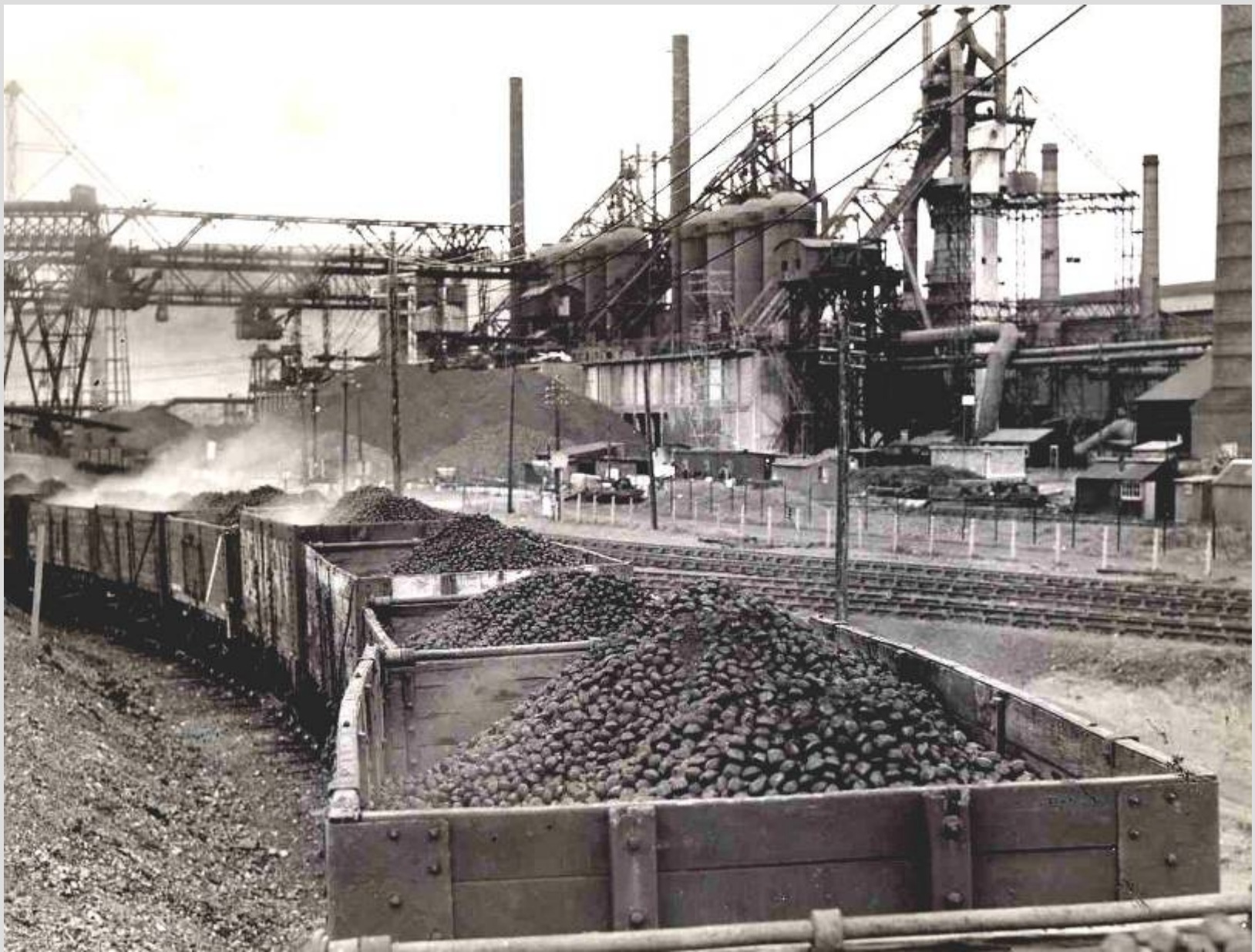
Phoenix fuel works under construction



Construction of Phoenix Wharf



Construction of Phoenix Wharf



Briquettes leaving Phoenix Fuel Works by rail



View of Port Talbot Docks



View of Port Talbot Docks



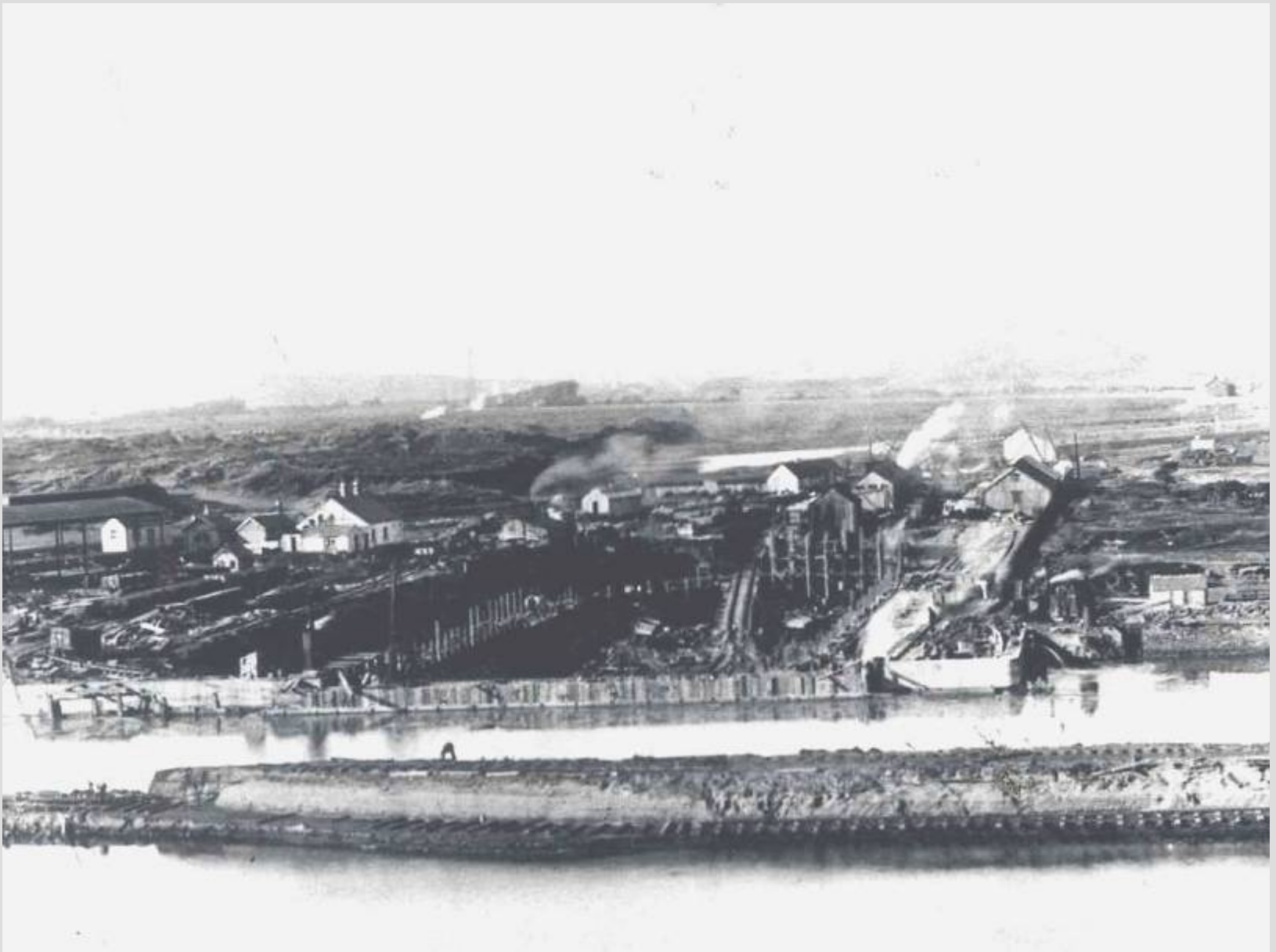
Taken from South end of entrance lock



General View - Port Talbot



Construction of new dock, showing old lock on the right



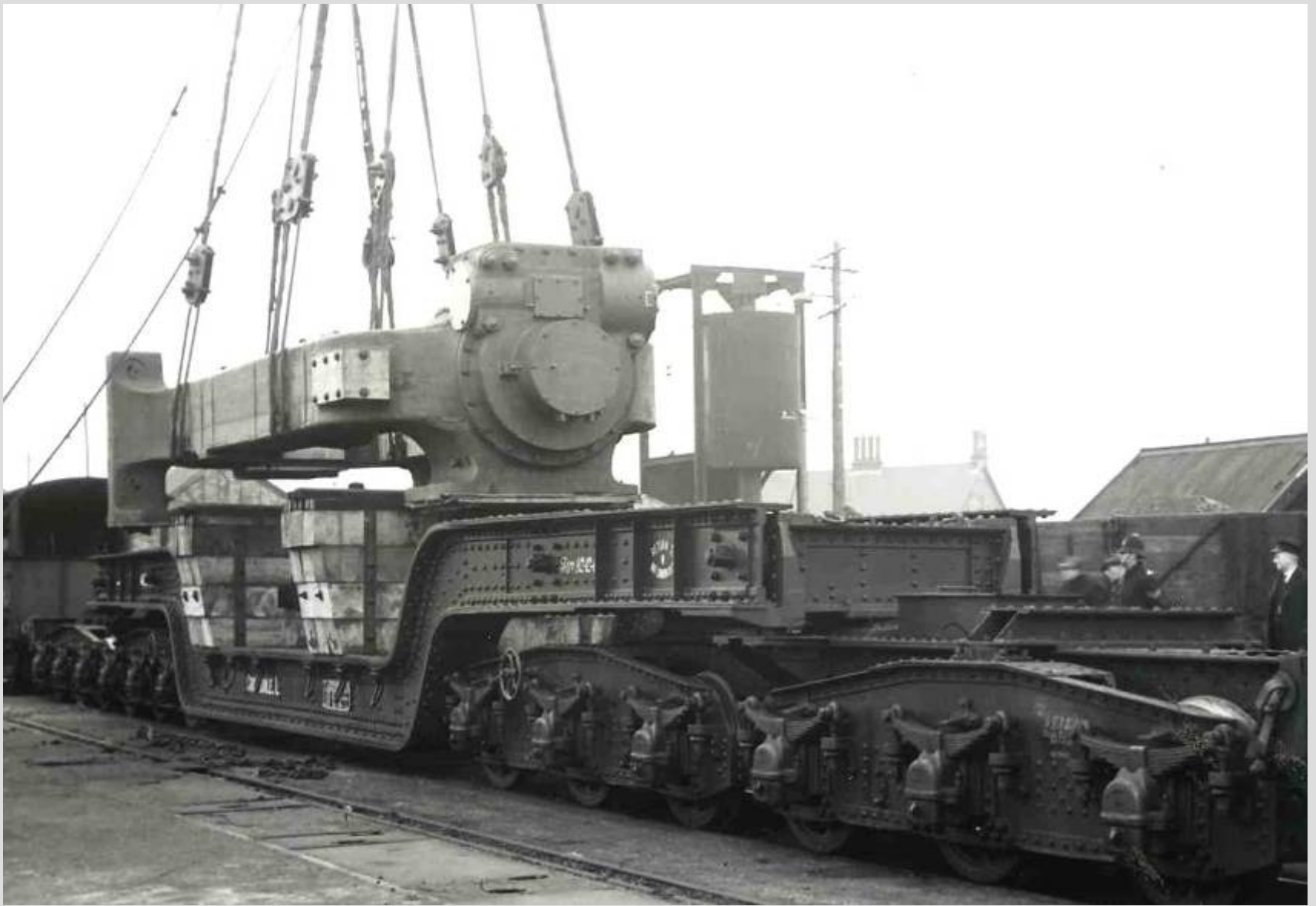
Construction of Port Talbot Dry Dock

An aerial photograph of the Port Talbot Dock area, showing a large body of water, industrial structures, and a city in the background. The text is overlaid on the image.

***The following photos are
Heavy lifts at
Port Talbot Dock***



Piece of machinery weighing approx 120 tons



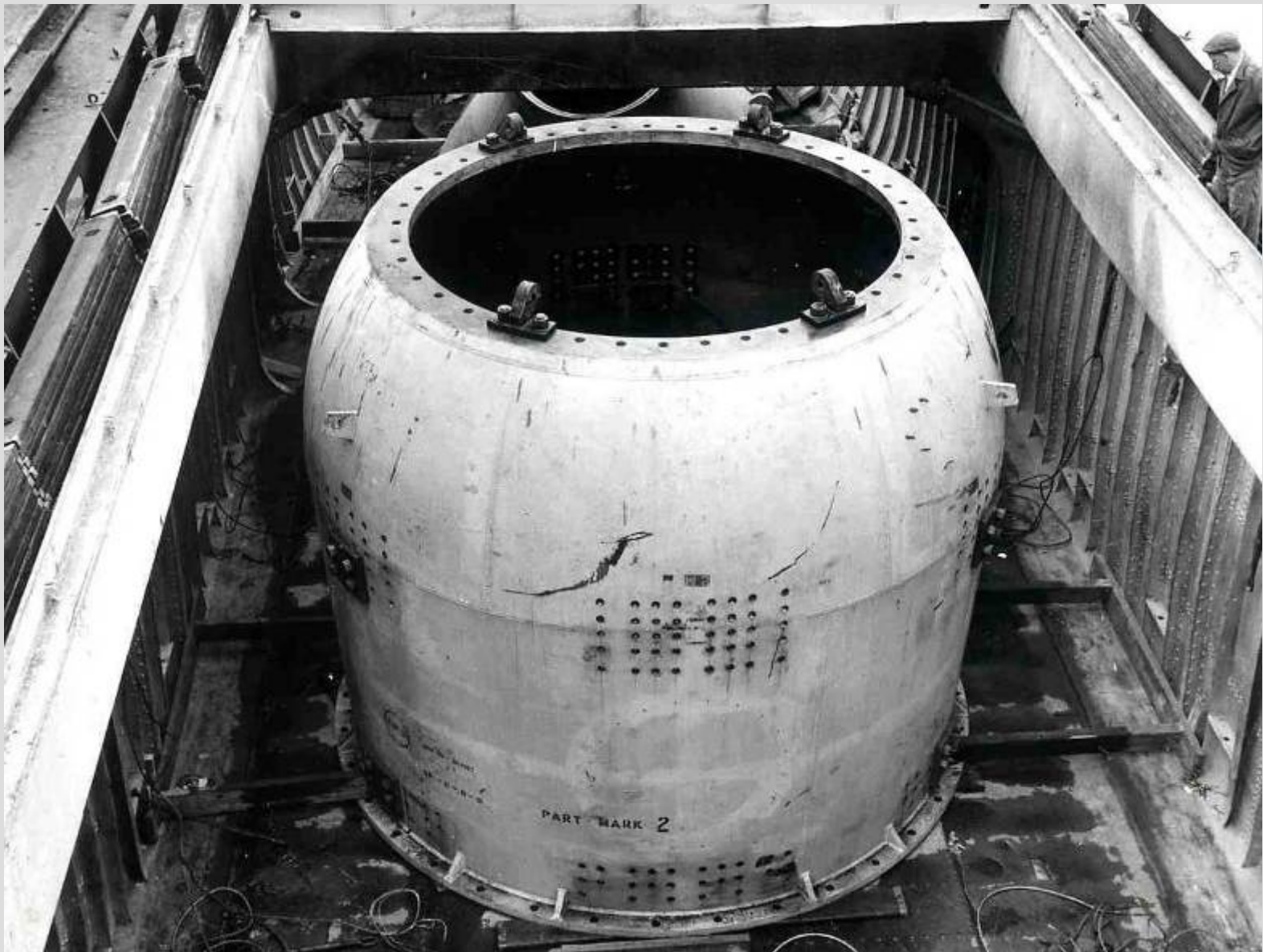
Piece of machinery weighing approx 120 tons



Discharging a heavy lift for the Steel Company of Wales



Heavy Lift for the Steel Company of Wales



Discharging of steel converter for the Steel Company of Wales



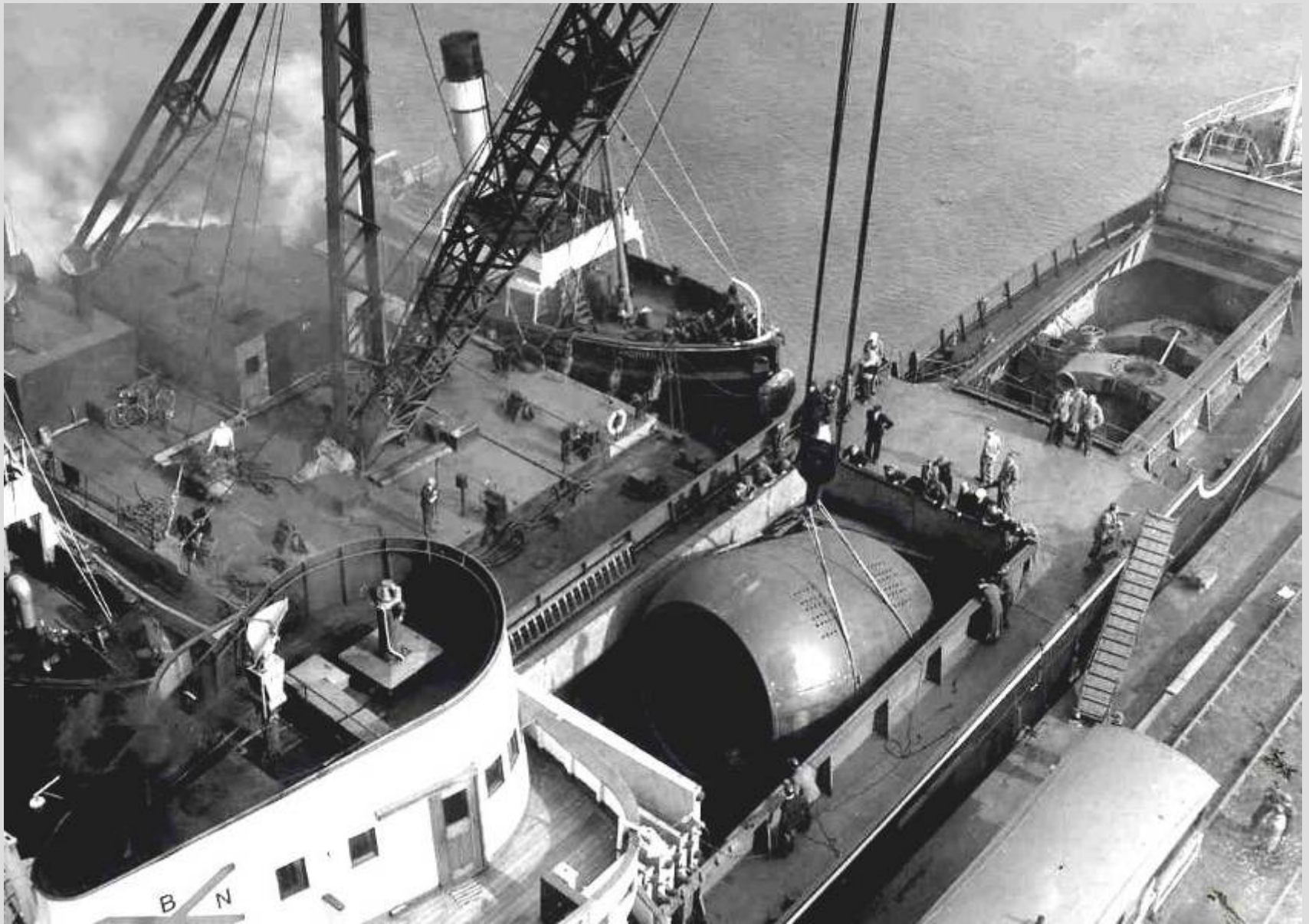
Discharge of steel converter for the Steel Company of Wales



Discharge of 50 ton capacity Bessemer converter



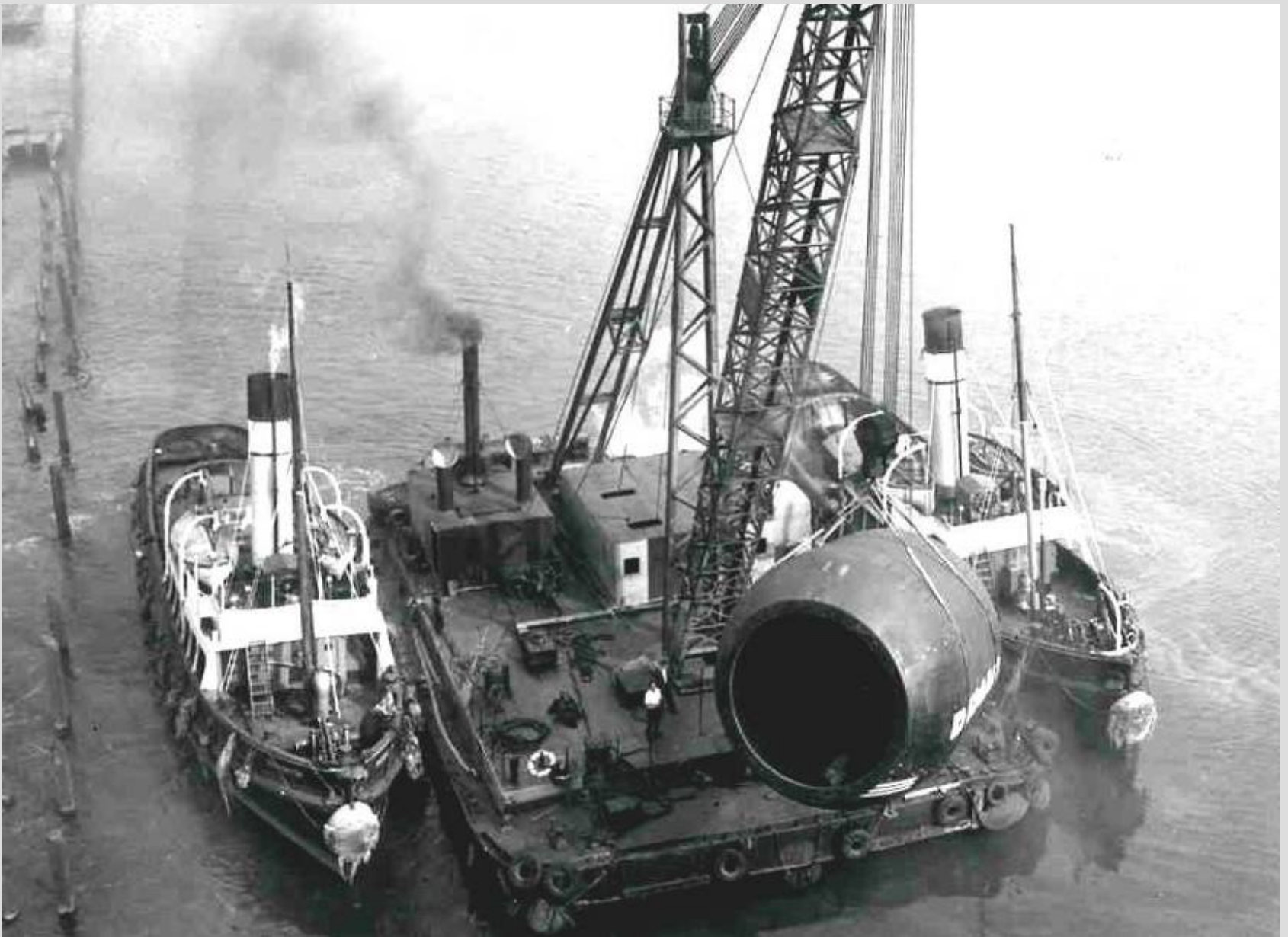
Floating crane ready to lift the Bessemer converter



Discharge of 50 ton capacity Bessemer converter



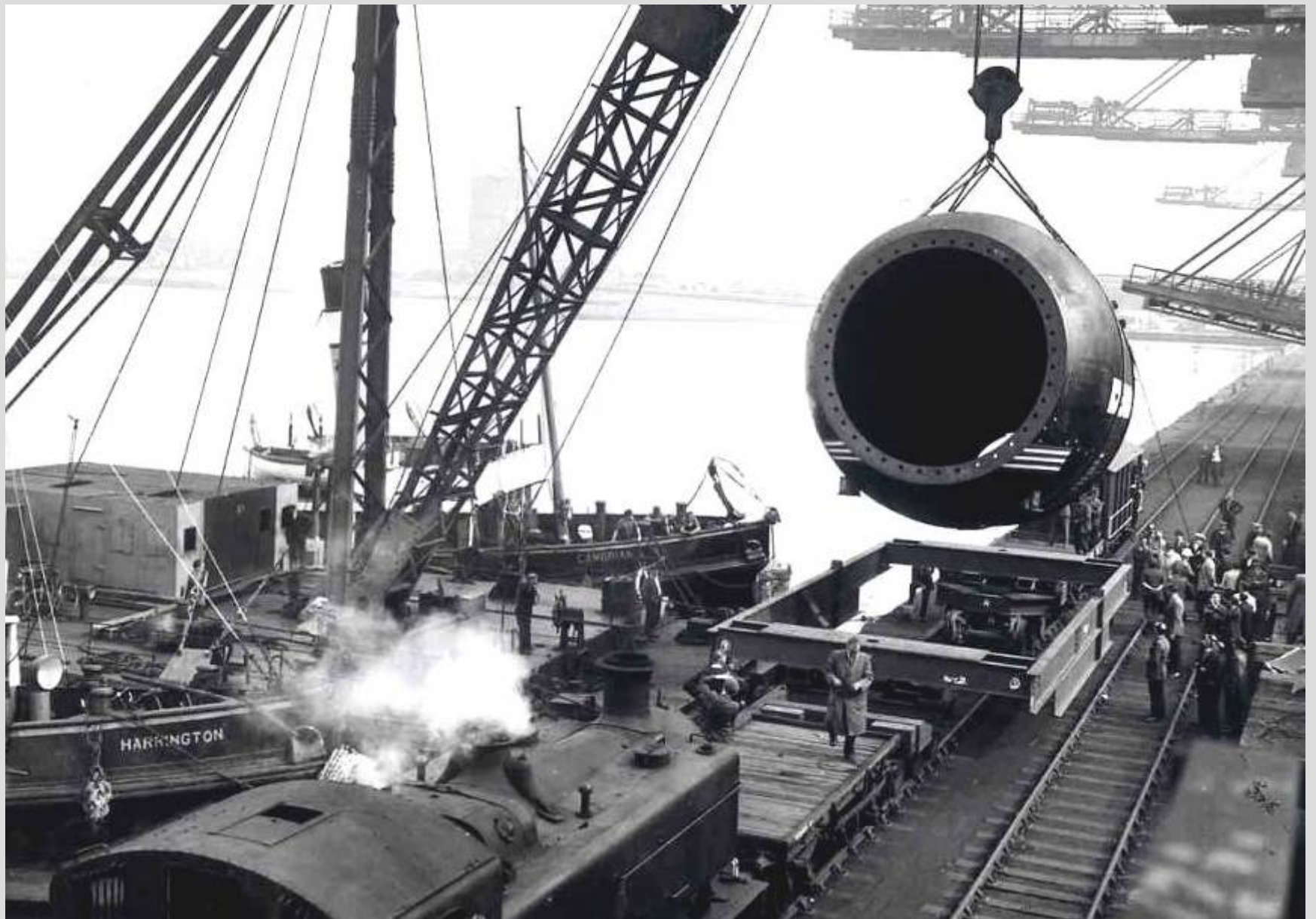
Discharge of a 50 ton capacity Bessemer Converter



Tugs moving the 50 ton capacity Bessemer converter



Discharge of a 50 ton capacity Bessemer Converter



Discharge of a 50 ton capacity Bessemer Converter



Discharge of 50 ton capacity Bessemen converter



Piece of housing machinery being discharged



***The
End***