

An aerial photograph of a large industrial port facility, identified as Port Talbot Dock. The image shows a wide river or harbor with several large cargo ships docked at long piers. In the background, there are numerous industrial buildings, cranes, and infrastructure. The text is overlaid in the center of the image.

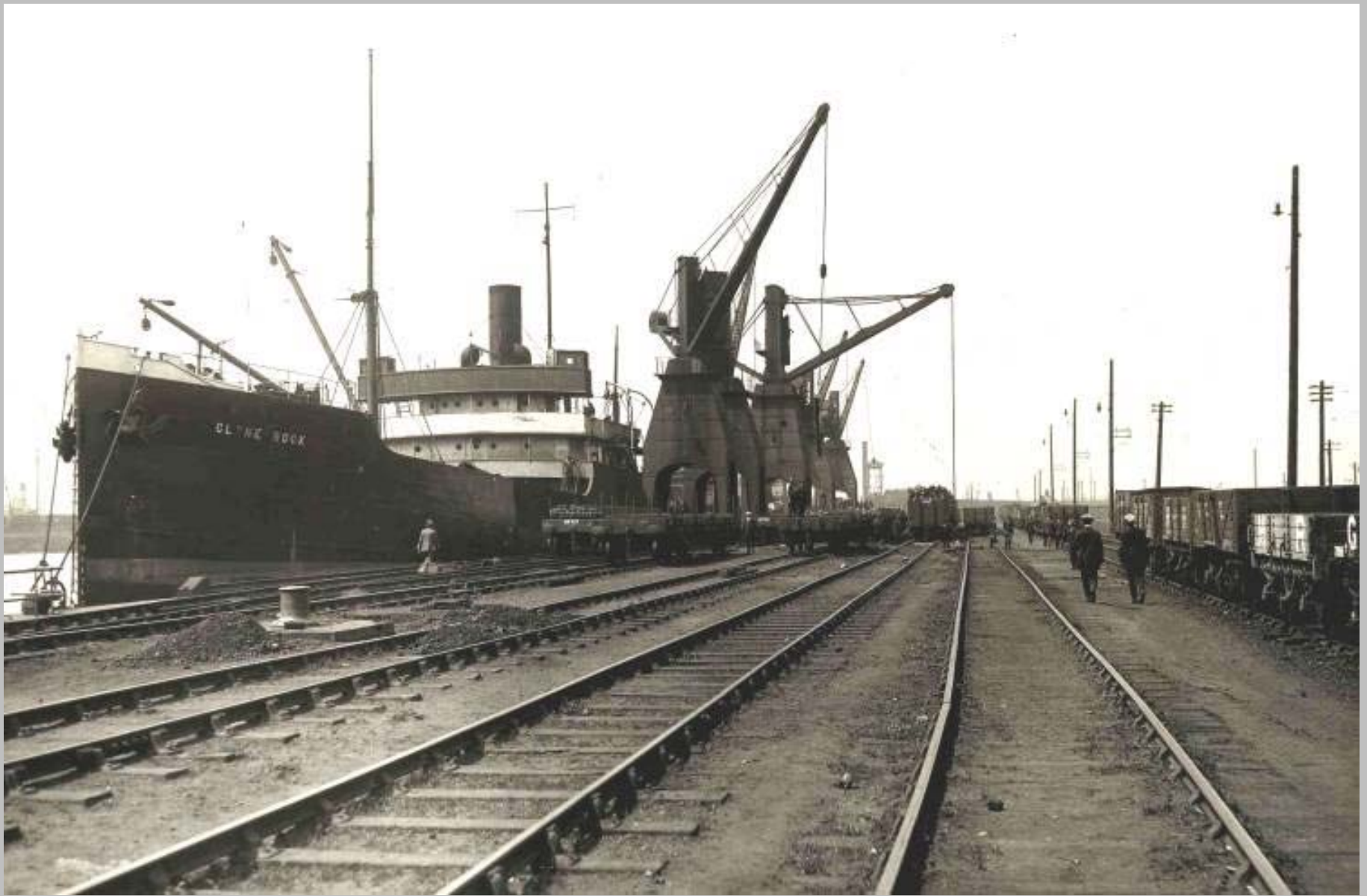
***The following Photos are of
cargo operations
on
Port Talbot Dock***



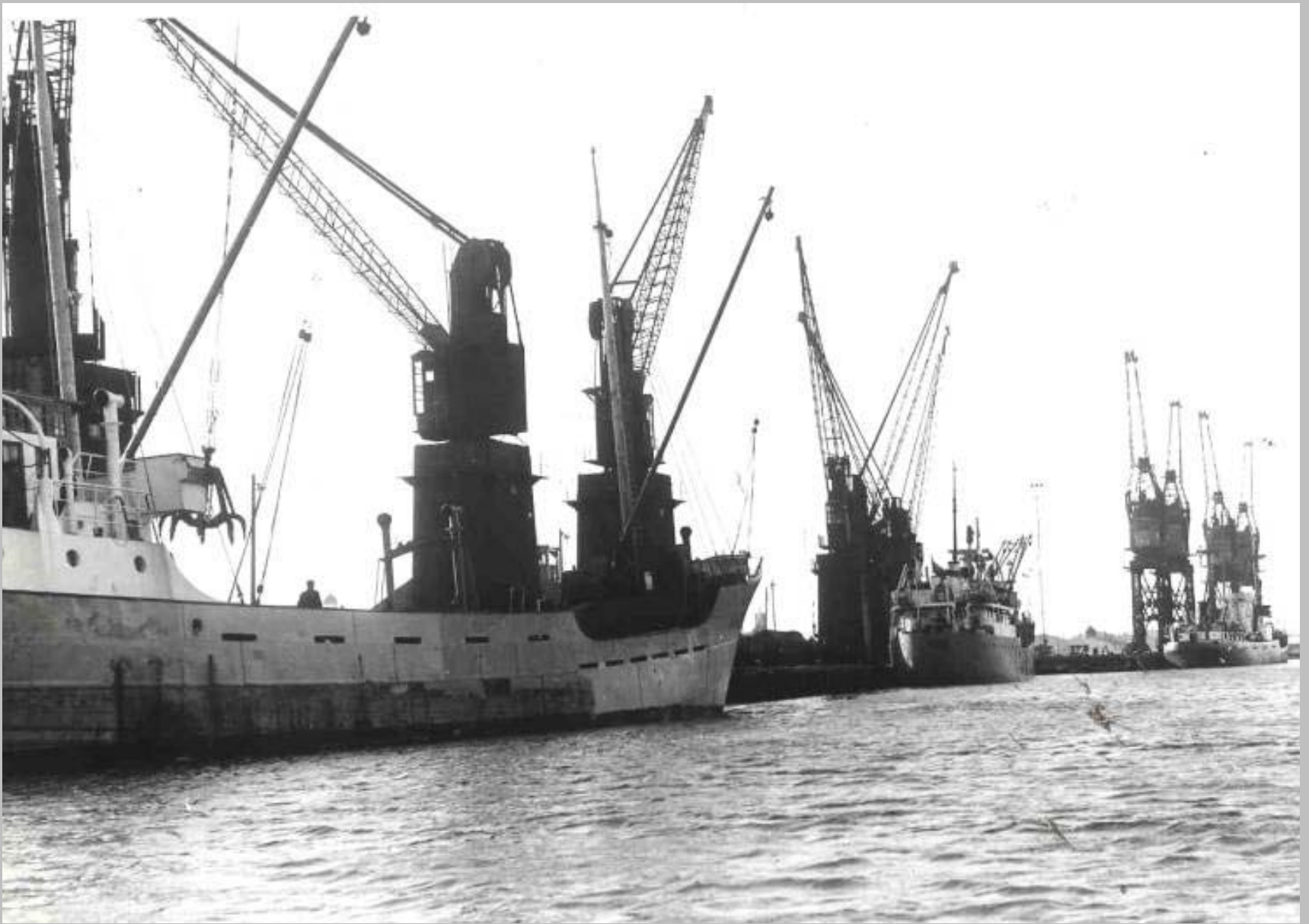
Foreground - Loading steel at Talbot Wharf into Russian vessel.



Russian ship loading steel



ss 'Clyne Rock' loading steel



General View - Port Talbot Docks



Sheeted wagons containing bundles of steel sheets berthed at Talbot Wharf awaiting shipment into Russian vessel



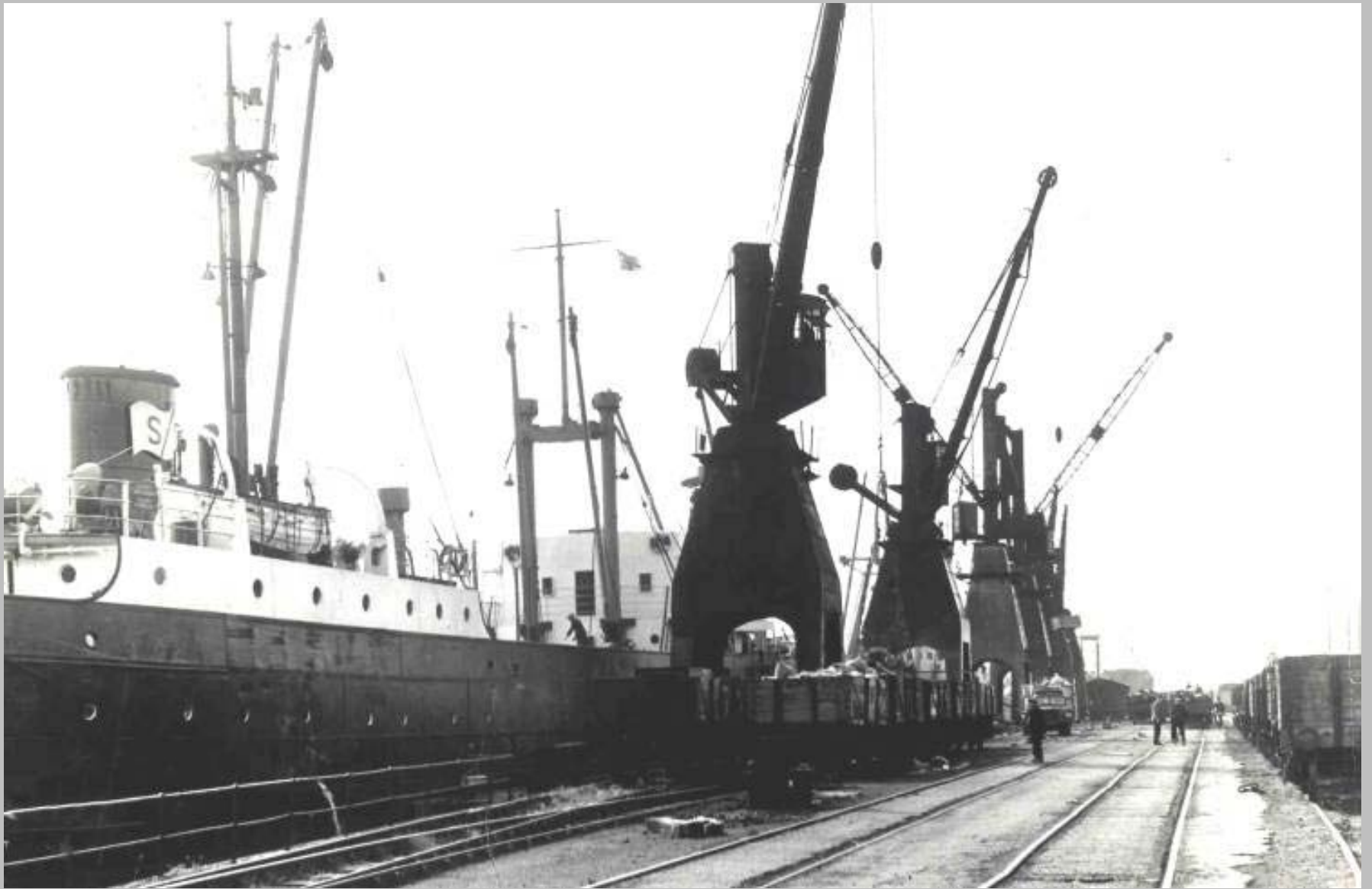
Discharging Magnesia in bulk



Discharging Magnesia in bulk



Discharging Magnesia in bulk



Foreground - Discharging Magensia in bags to wagons. Background - Discharging telegraph poles



The M.V. "Ormsary" discharging 8509 tons of iron concentrates by grabs, at the new 10-ton electric crane berth , Talbot Wharf extension, Port Talbot Docks. 9th-12th August, 1959. This was the first vessel to be discharged by grabs at the berth.



Grab in the hold of the mv Ormsary



mv Ormsary on Talbot Wharf



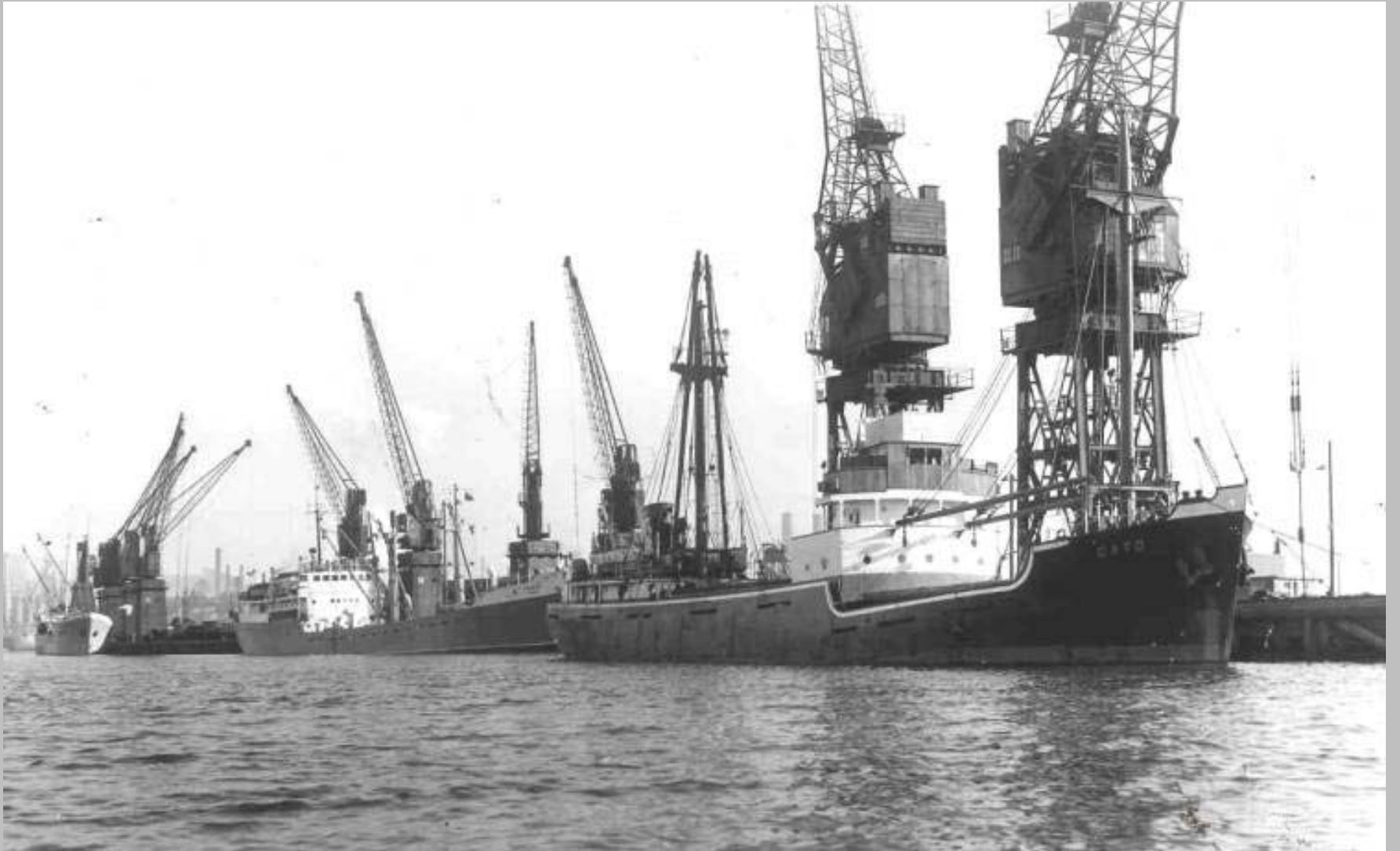
Fork lift truck stowing bundles of steel sheets under deck.



mv 'Cato' on Talbot Wharf Extension



Discharging Magnesia in bulk



Talbot Wharf Extension



ss 'Isomeri'



mv 'Lingeduk', Rotterdam



Gypsum Rock ex-ship being fed on to overhead conveyor belt through hopper



Overhead gantry with hopper and conveyor belt for carrying gypsum rock



The first vessel to be dealt with at the new 10-ton electric crane berth. "Linda Dan"



Discharge of Wood Pulp "Linda Dan"



First vessel at Talbot Wharf Extension by new 10-ton cranes "Linda Dan"



Discharging oil at Phoenix Wharf



Discharging oil at Phoenix Wharf



***The
End***