An aerial photograph of the Port Talbot Dock, showing a large body of water, several docked ships, and industrial structures along the waterfront. The text 'Engineering maintenance at Port Talbot Dock' is overlaid in blue. The background image is in grayscale.

Engineering  
maintenance

at

Port Talbot Dock



*Floating crane entering the locks to unstep the north outer lock gate*



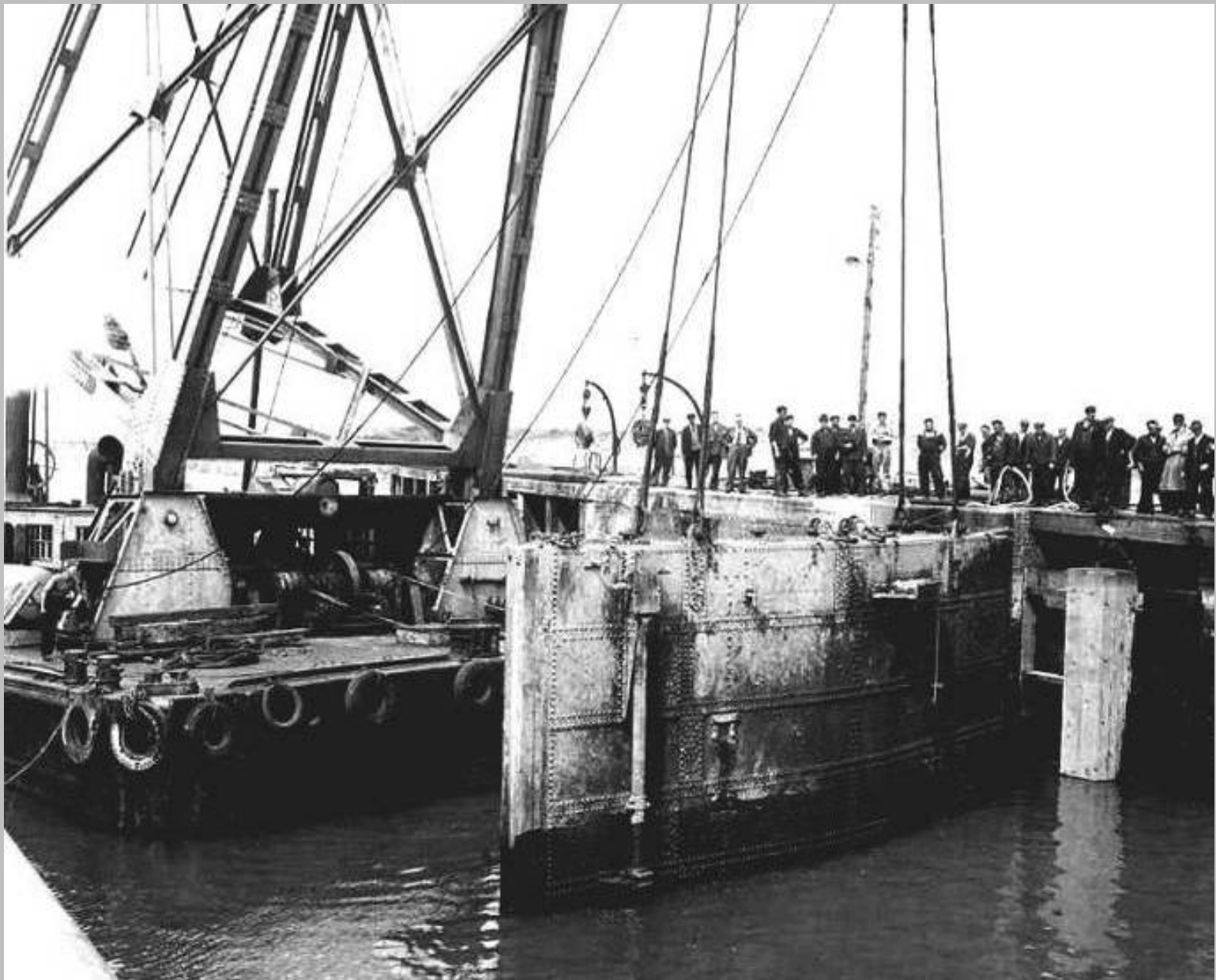
*100 ton floating crane taking the weight of north outer lock gate 1958*



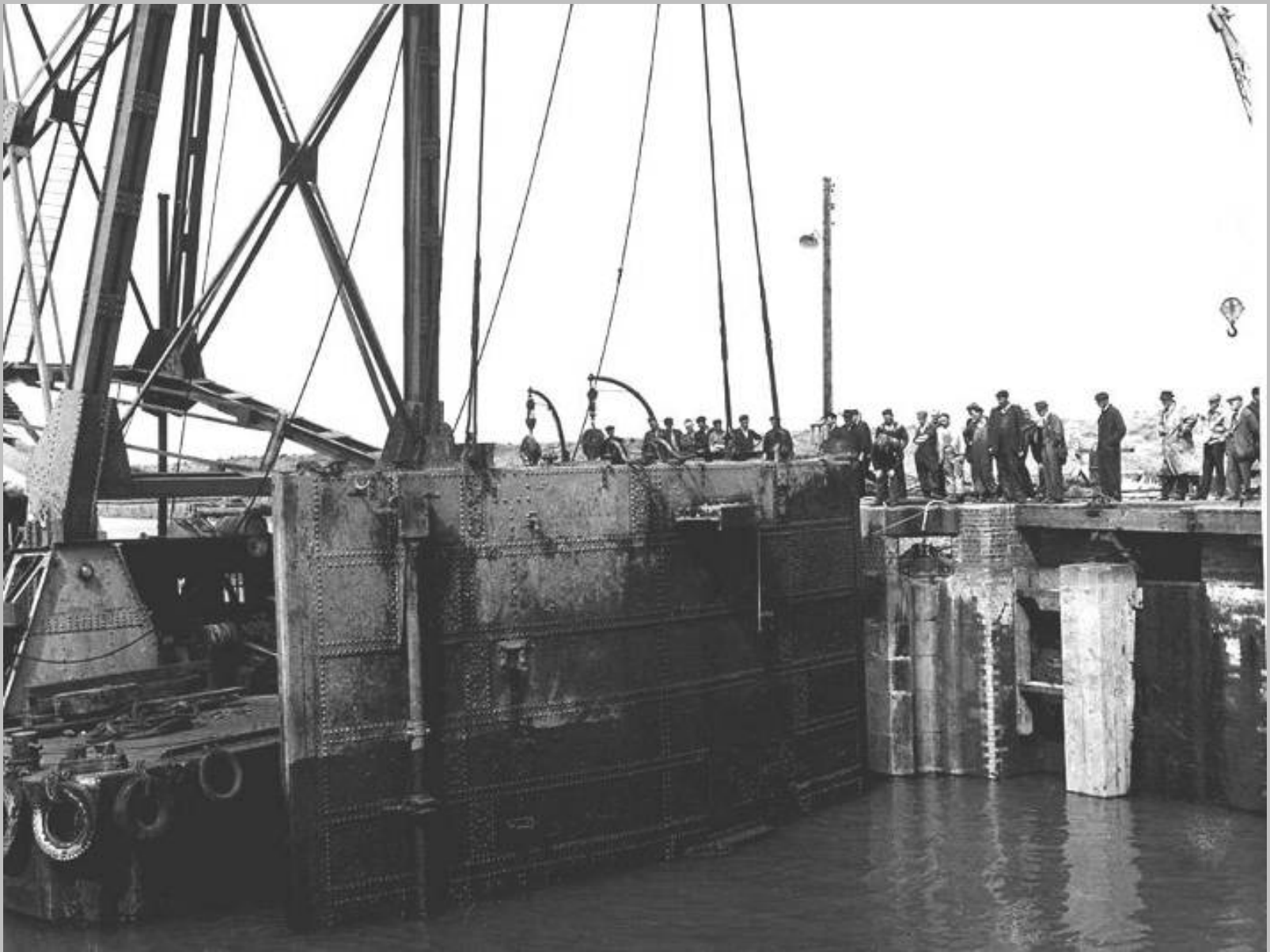
*100 ton floating crane preparing to unstep north outer lock gate 1958*



*100 ton floating crane preparing to unstep north outer lock gate 1958*



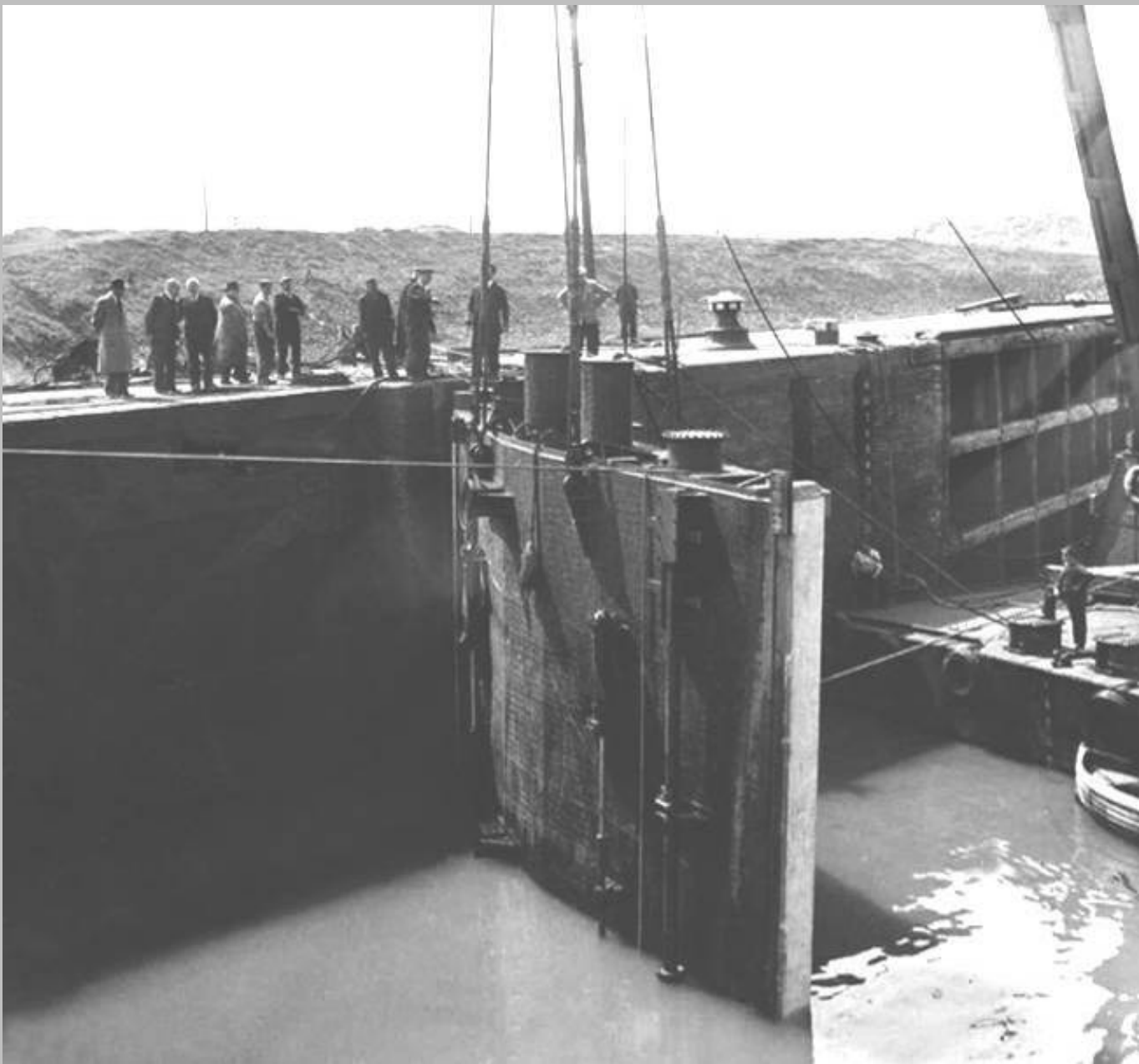
*100 ton floating crane taking the weight of north outer lock gate 1958*



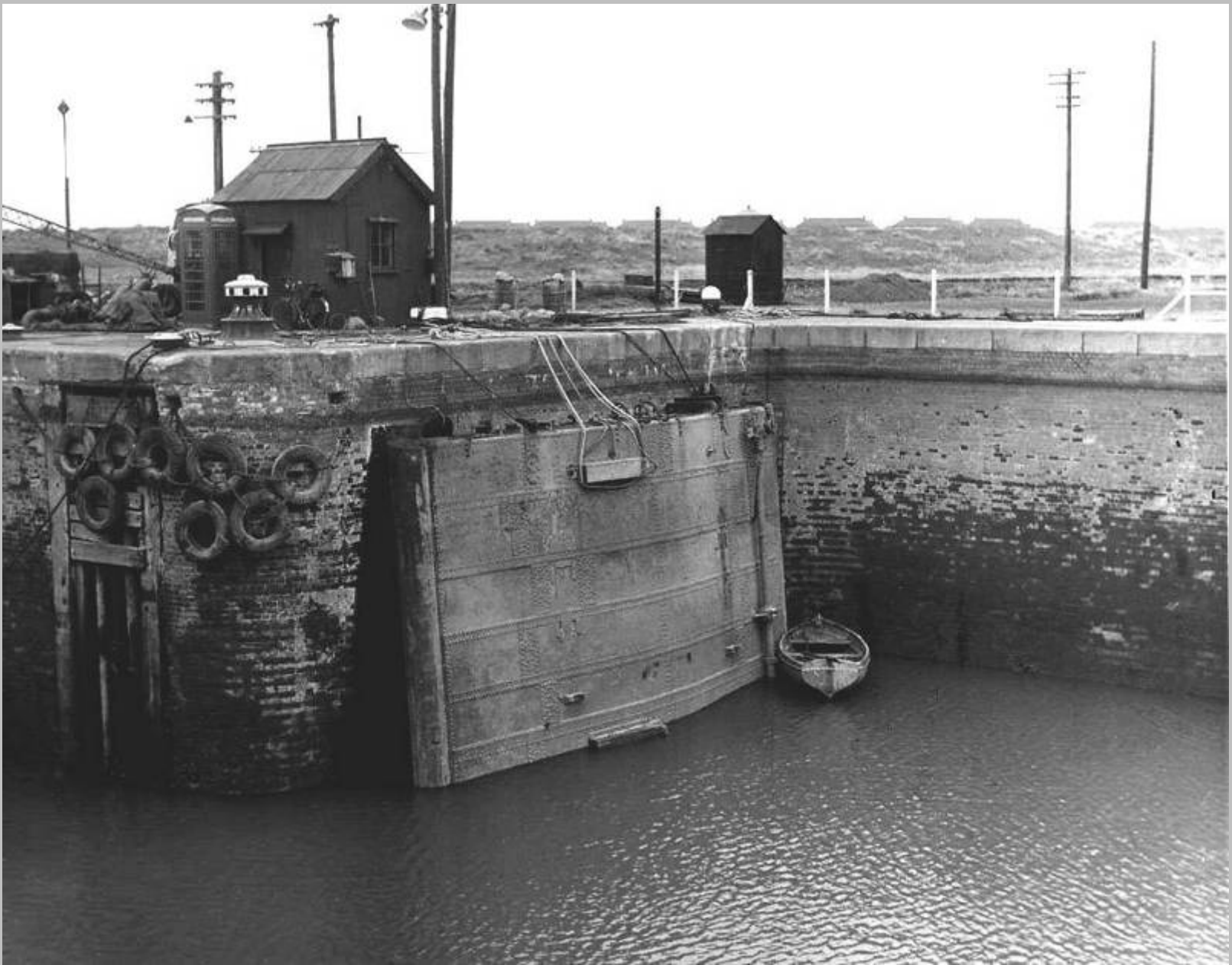
*100 ton floating crane taking the weight of north outer lock gate 1958*



*North outer lock gate, semi floating in east end of lock lay by 1958*



*Unstepping south outer lock gate 1958*



*South outer lock gate in upright position at west end of lock lay by 1958*



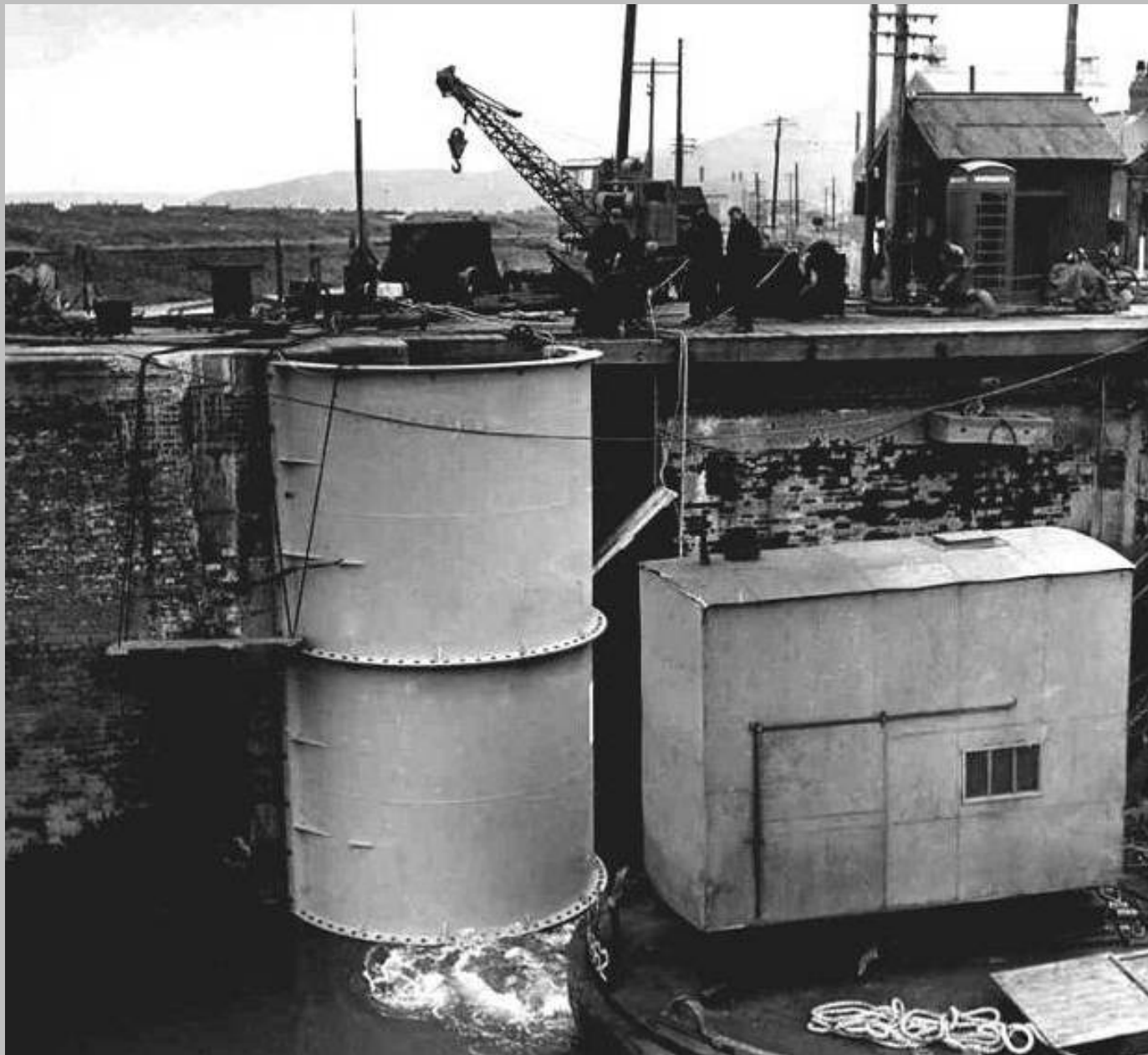
Floating crane in lock with lock gate afloat 1958



*Floating crane carrying limpet dam to north outer lock gate recess 1958*



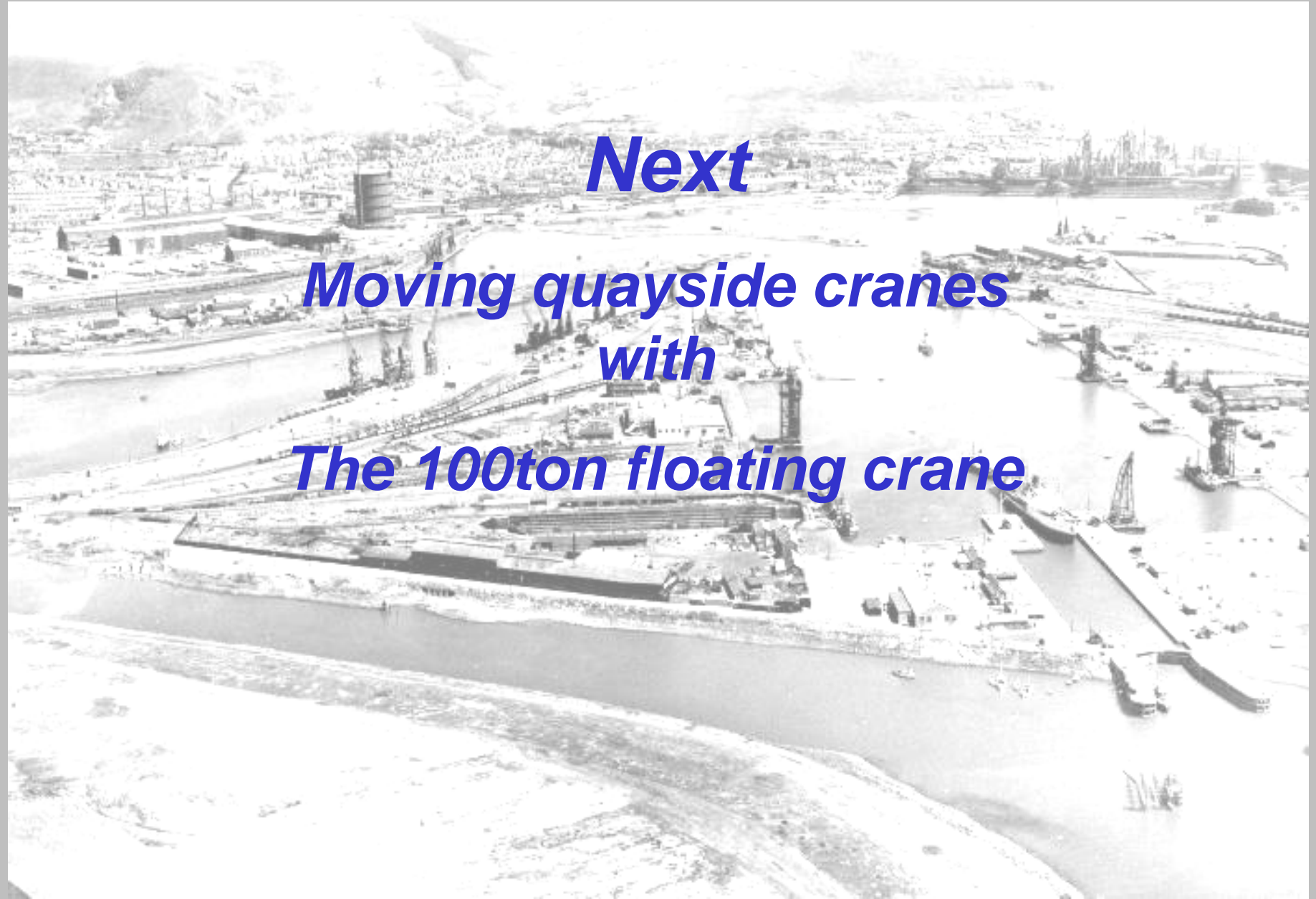
***Floating crane carrying limpet dam to north outer lock gate 1958***



*Limpet dam in position at the north outer lock gate 1958*



*Limpet dam in position at the north outer lock gate 1958*



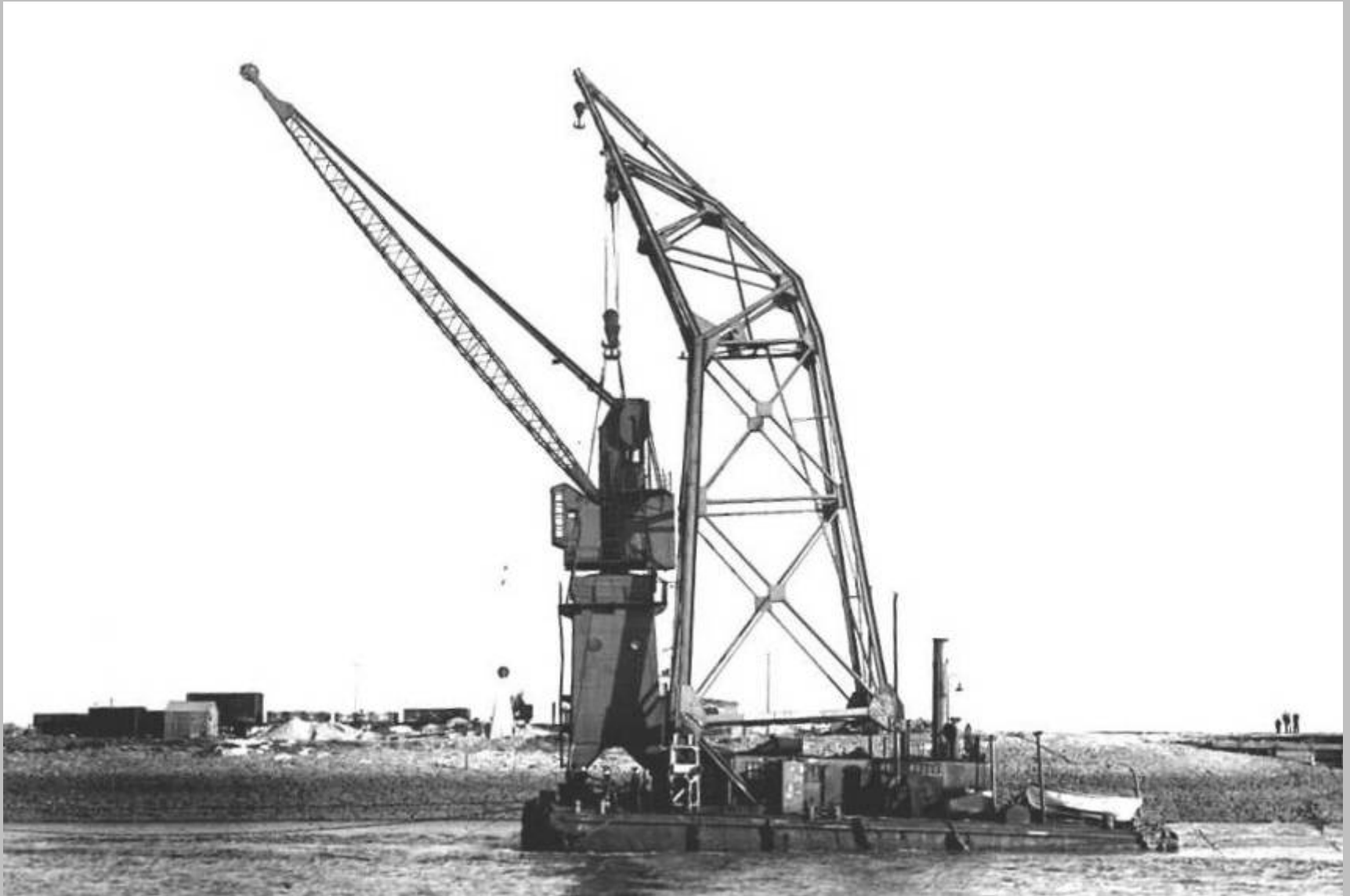
***Next***

***Moving quayside cranes  
with***

***The 100ton floating crane***



*100 ton floating crane carrying hydraulic quayside crane from Barry, approaching Port Talbot lock entrance in 1946.*



*100 ton floating crane carrying hydraulic quayside crane from Barry approaching Port Talbot lock entrance in 1946*



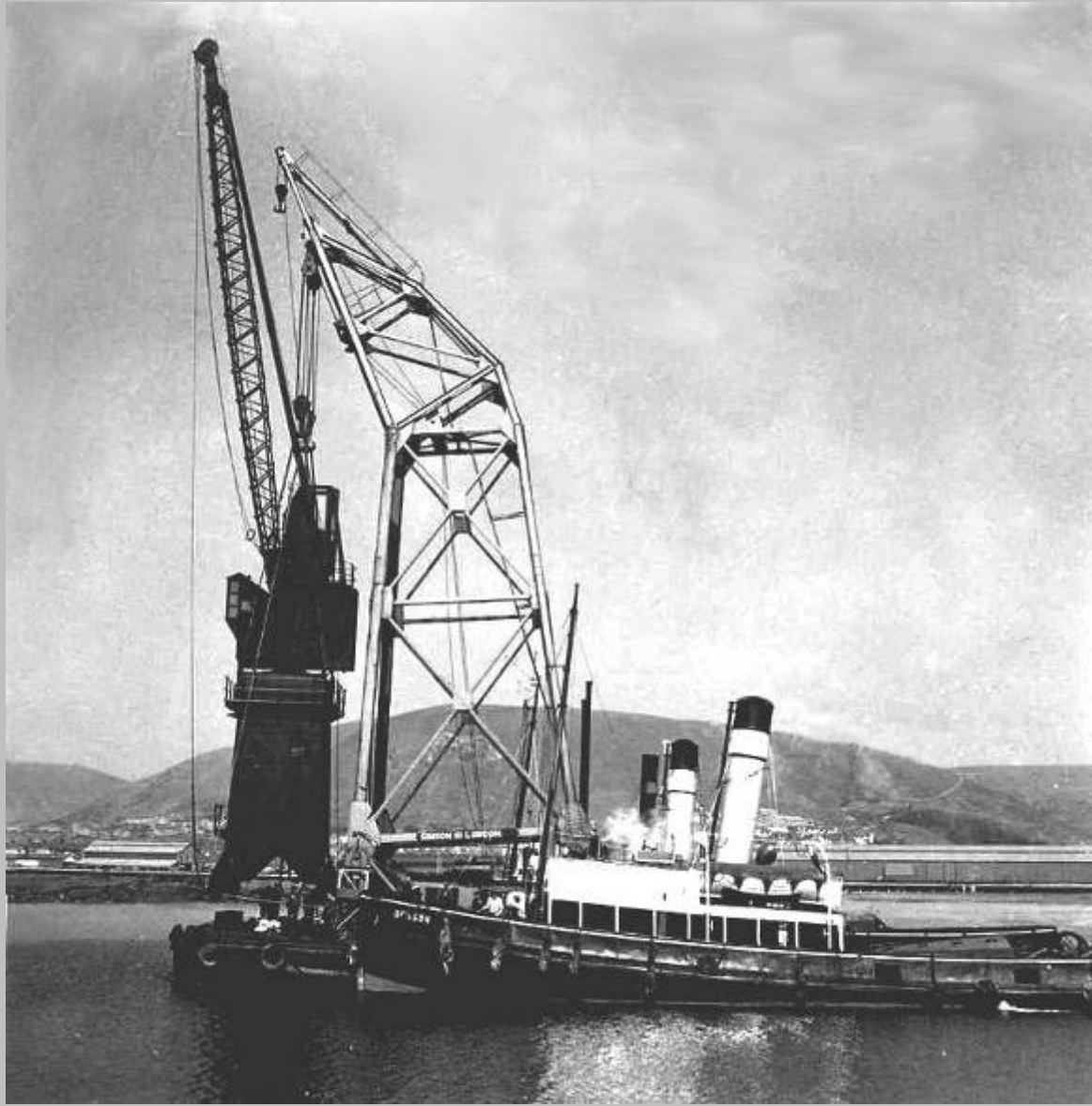
*100 ton floating crane landing hydraulic quayside crane on Talbot Wharf in 1946*



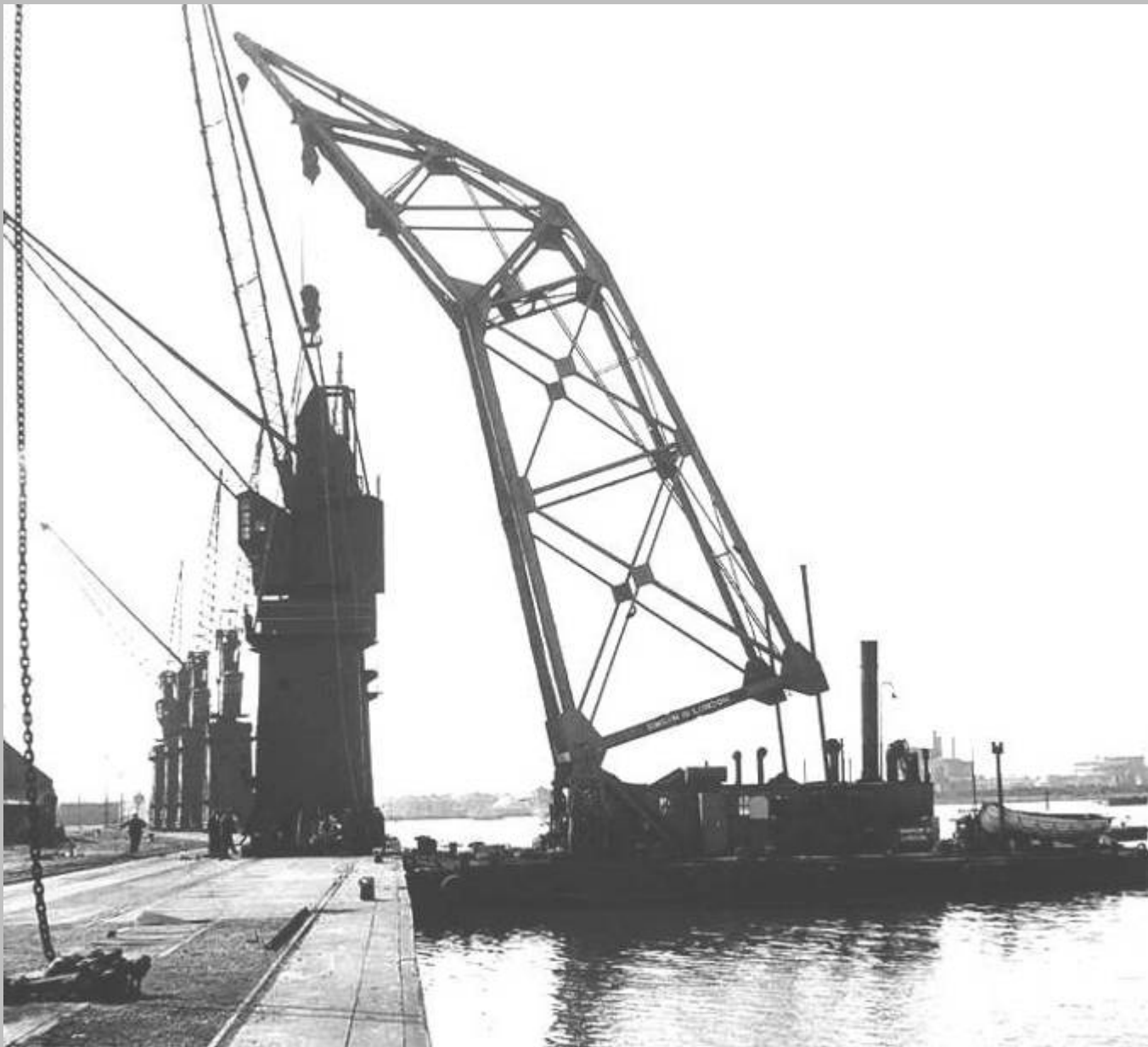
*100 ton floating crane landing hydraulic quayside crane on Talbot Wharf in 1946*



100 ton floating crane carrying hydraulic quayside crane across Port Talbot Dock –  
tugs 'Benson' & 'Herculaneum' 1960



*100 ton floating crane carrying hydraulic quayside crane across Port Talbot Dock – tugs 'Benson' & 'Herculaneum' 1960*



*100 ton floating crane landing hydraulic quayside crane on Talbot Wharf 1960*



*100 ton floating crane landing hydraulic quayside crane on Talbot Wharf –  
tugs 'Benson' & 'Herculaneum' 1960*



***The  
End***