An aerial, black and white photograph of a large port area. The water is filled with numerous ships, including several large ore carriers. The shoreline is lined with industrial buildings, piers, and cranes. In the background, a city is visible on a hillside. The text is overlaid in the center of the image.

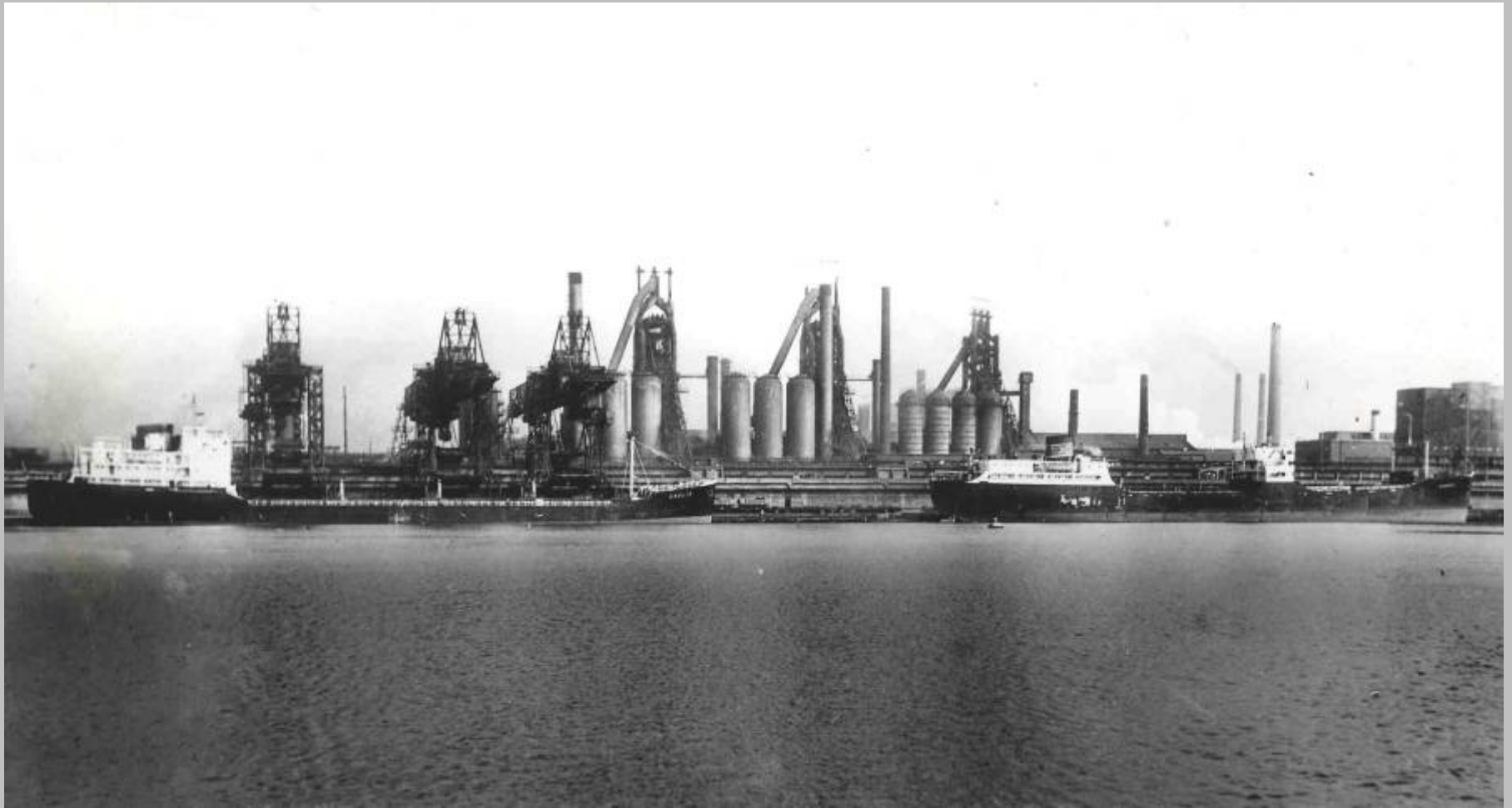
***Photos of the Ore
Carriers
on
Margam Wharf,
Port Talbot
Dock***



Mv 'Orelia' discharging iron ore in 1956



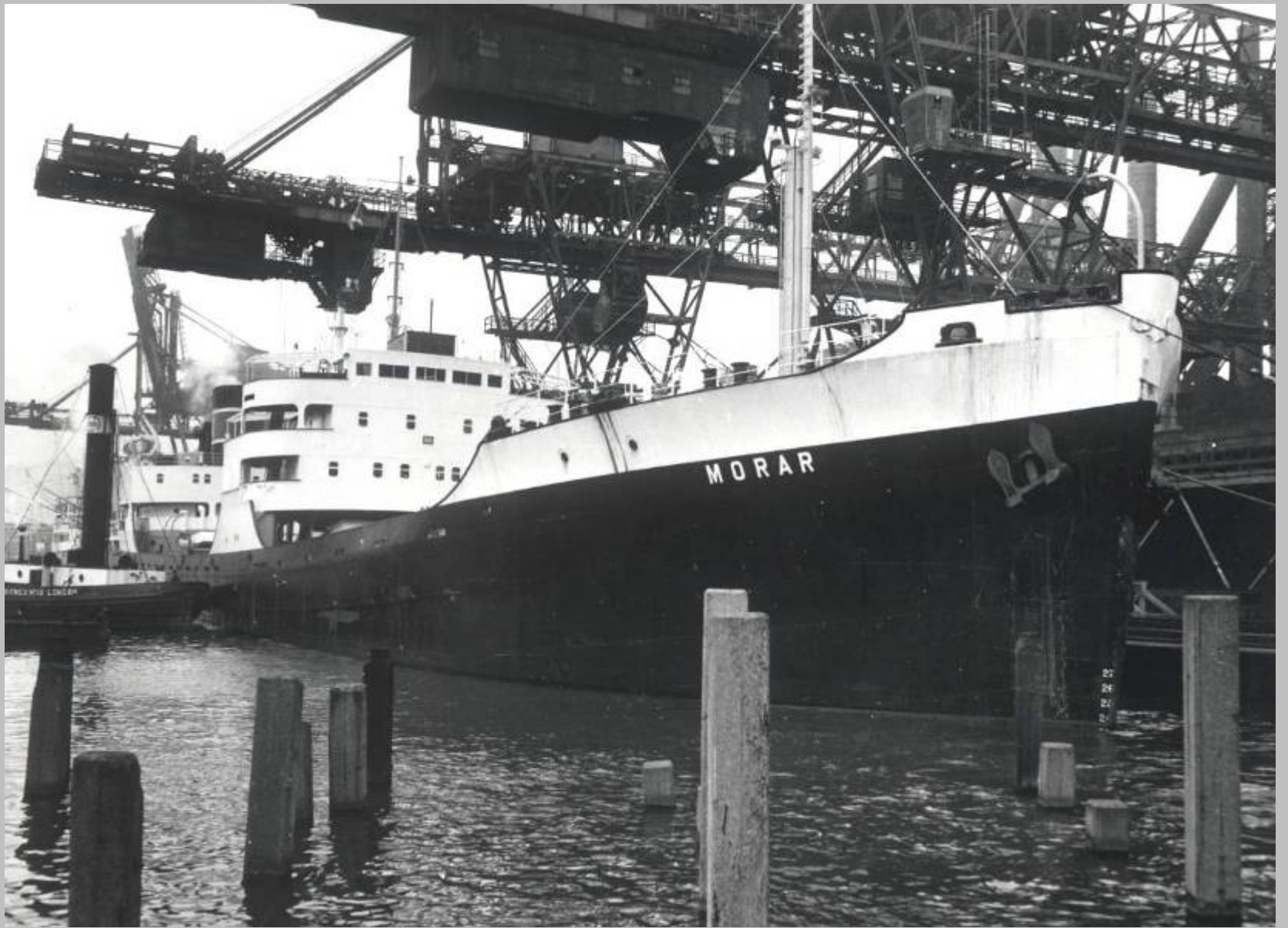
Transporter cranes Margam Wharf



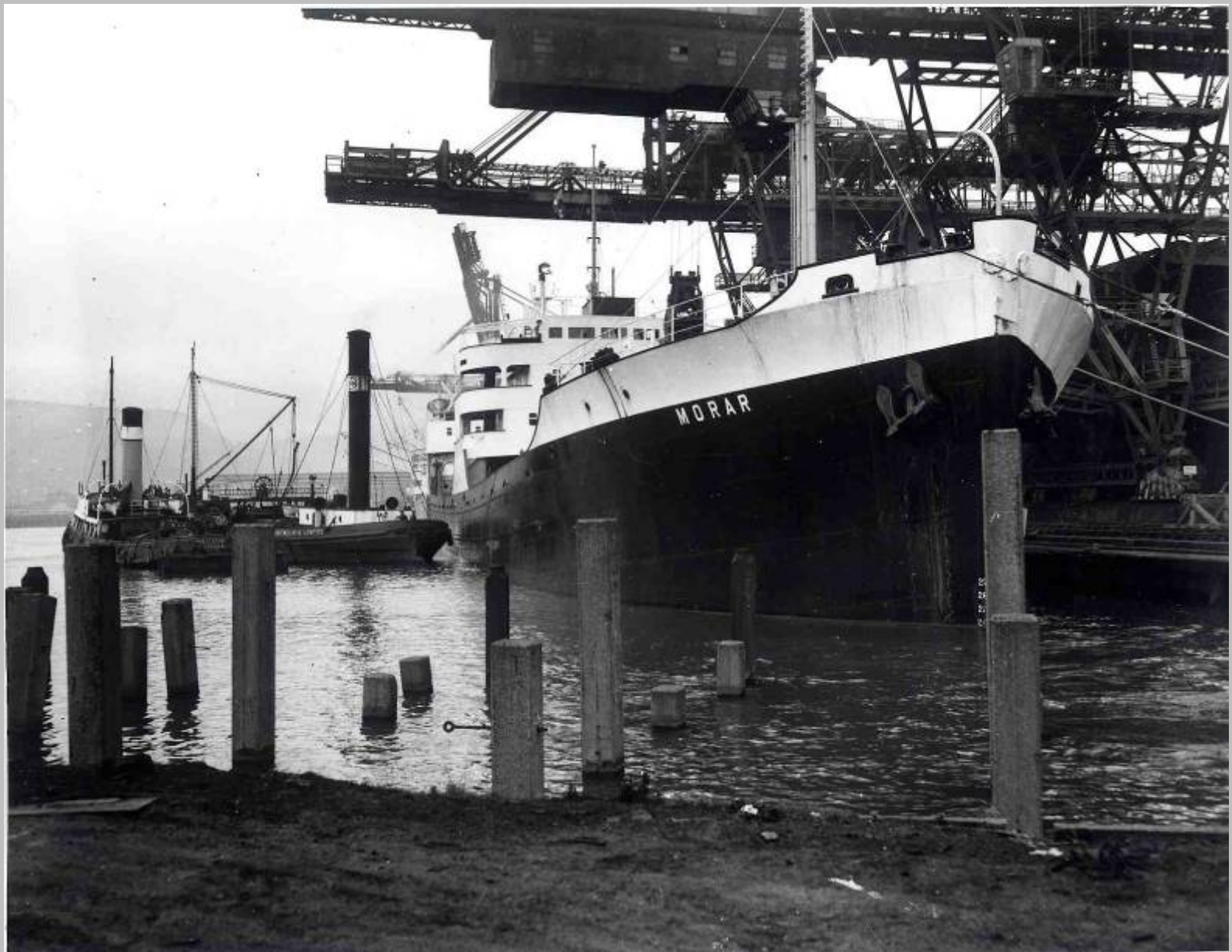
Iron Ore Carriers mv Orcha and mv Gleddoch on Margam Wharf 1956



mv 'Morar' Margam Wharf 1956



mv 'Morar' Margam Wharf



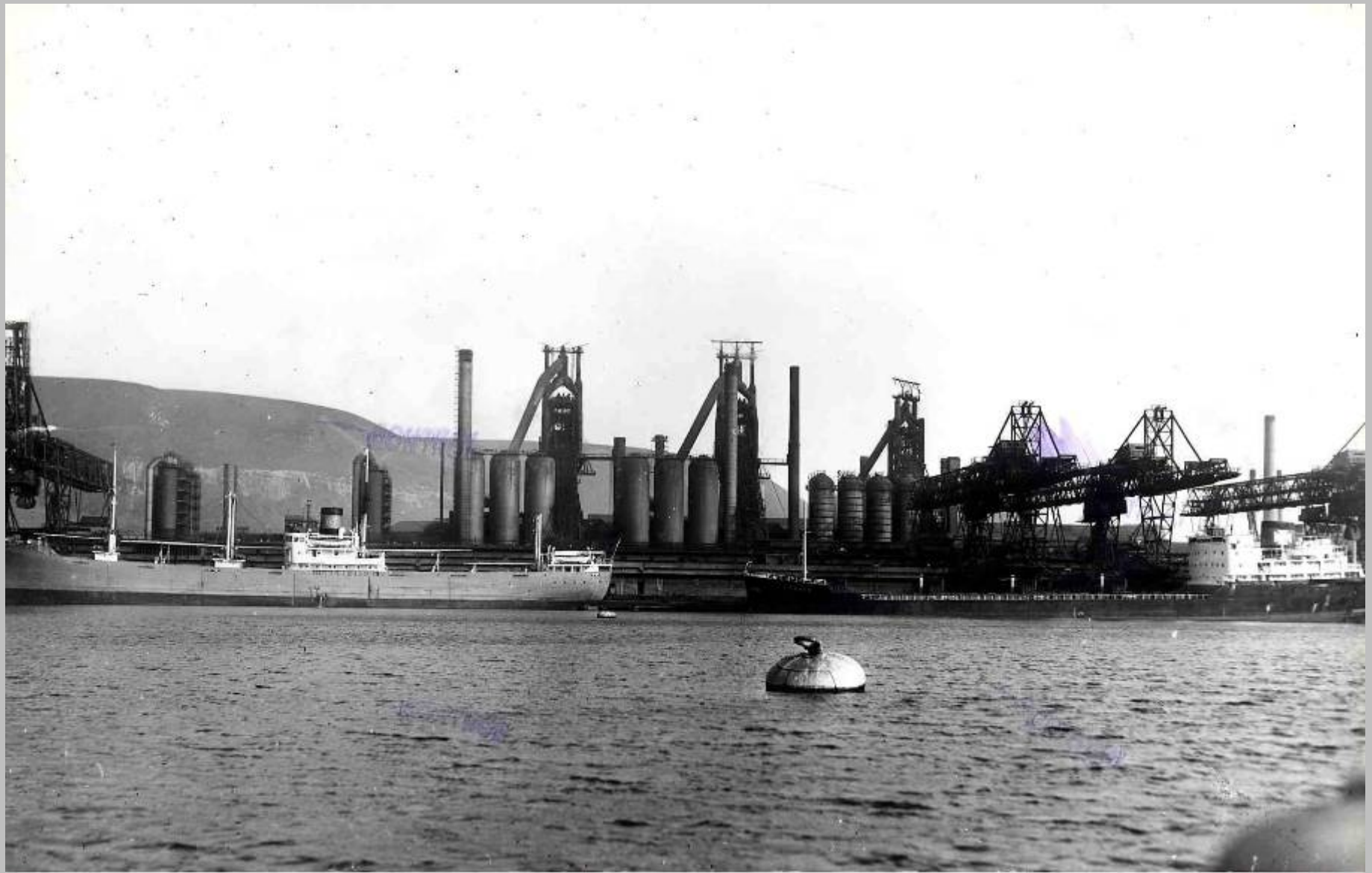
mv 'Morar' refuelling from an oil barge with Alexandra tug assisting



mv 'Morar' Margam Wharf



Mv Orcha and mv Gleddoch



Margam Wharf extension



Crane lowering grab into the hold



3 Transporter cranes viewed from No. 10 quay



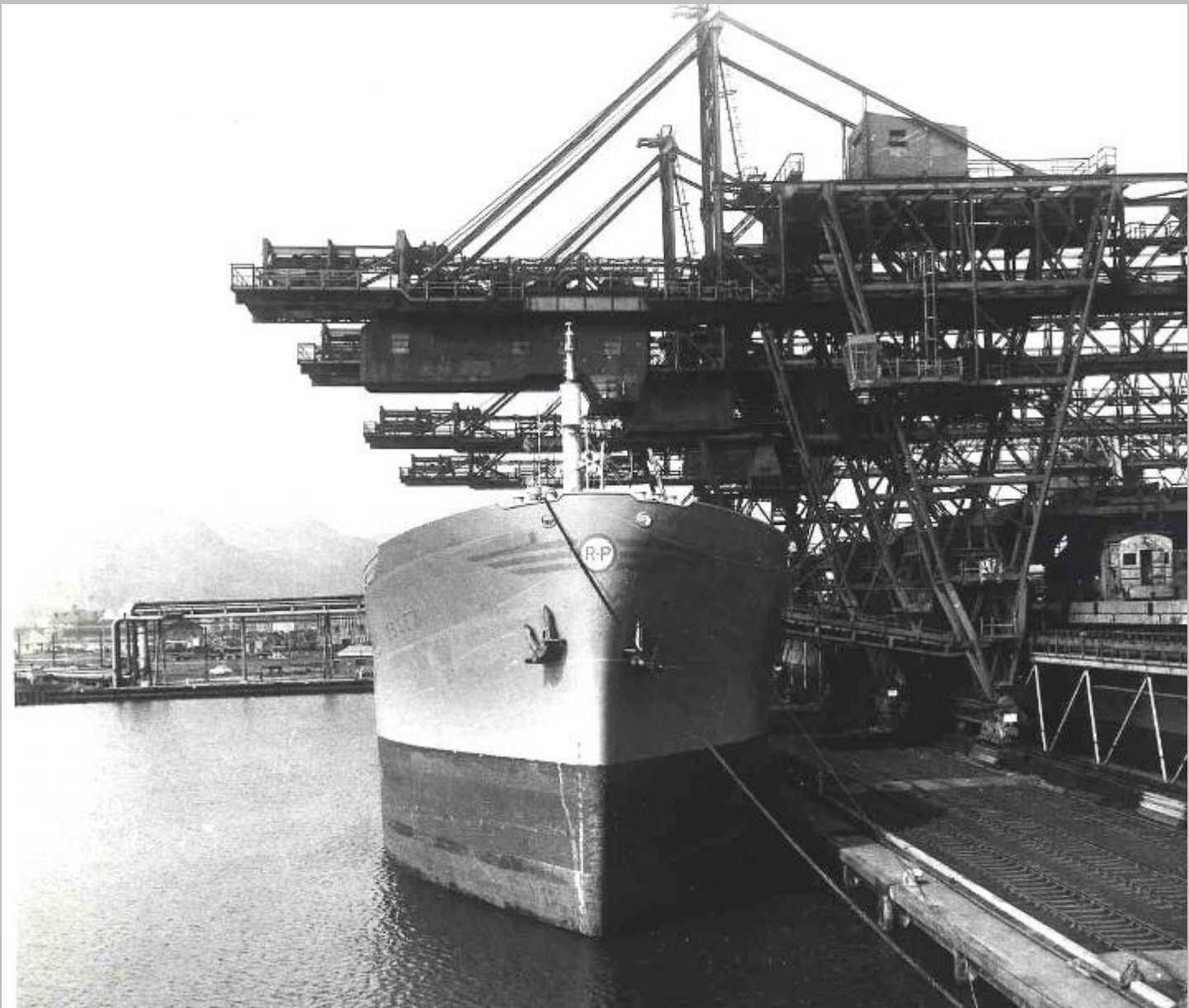
Looking up at the driving cab of the transporter crane



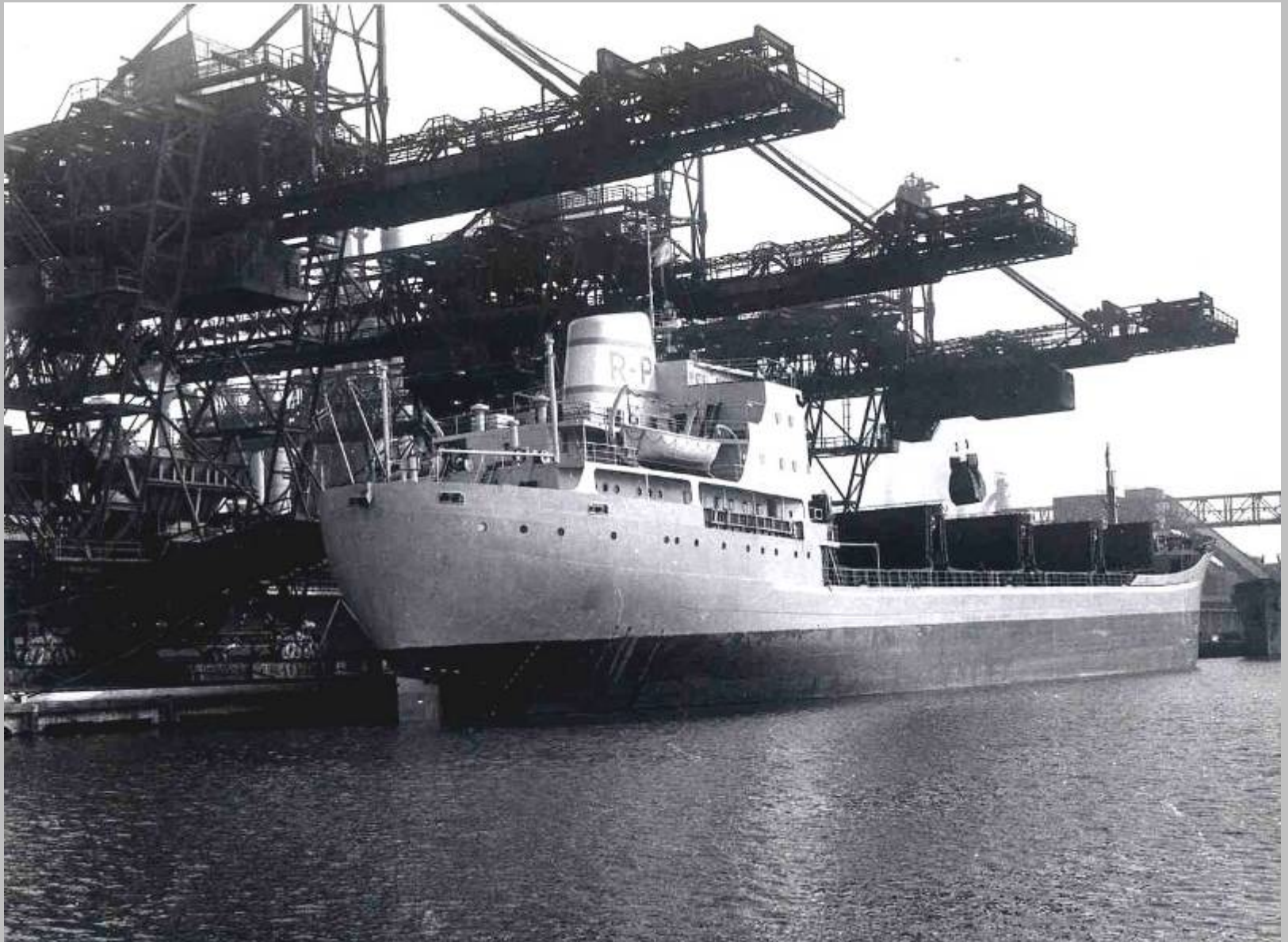
View looking down the wharf



mv Essex in 1959



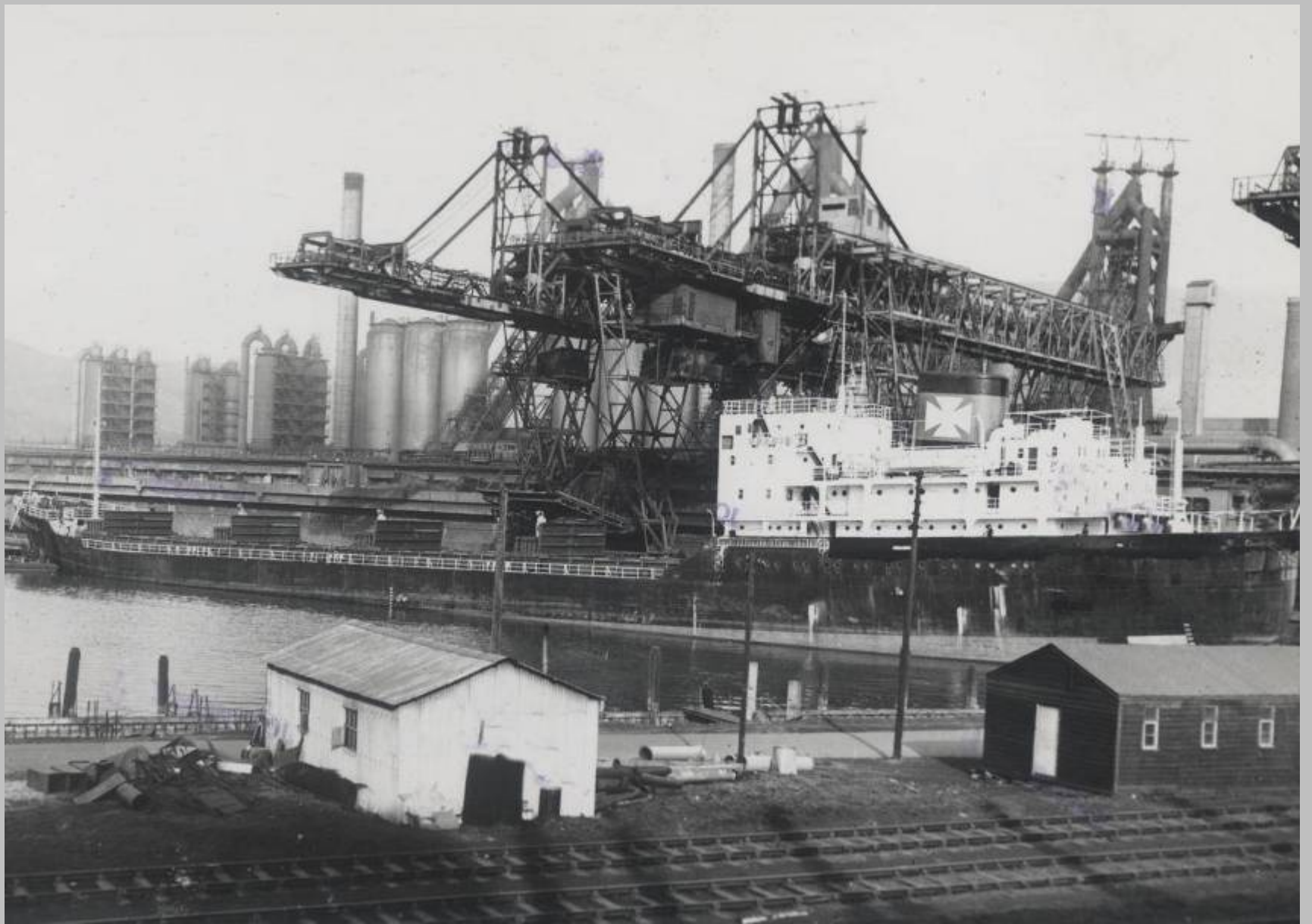
Mv Essex 1959



Stern view of mv Essex



Ss 'Noreg' Margam Wharf in 1951



Margam Wharf



Unloaded ore carrier with tugs in attendance ready to sail

An aerial, black and white photograph of a vast industrial port or shipyard. The scene is filled with numerous large ships, including cargo vessels and sailing ships, docked at long piers. The water is dark, and the surrounding land is densely packed with industrial buildings, cranes, and infrastructure. In the background, a city is visible, built on a hillside overlooking the water. The overall atmosphere is one of a busy, large-scale industrial operation.

***The
End***

***To return to Menu use the left
arrow on the explorer bar***